

Plan B5

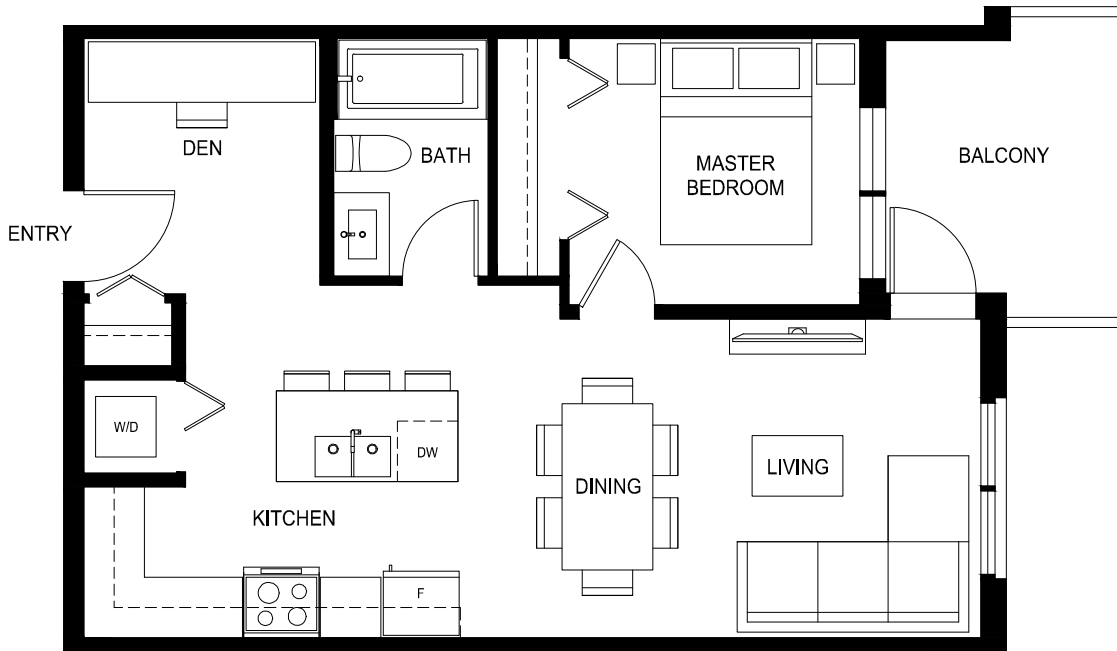
1 Bed + Den, 1 Bath

Interior: 591 Sq Ft / Exterior: 61 Sq Ft

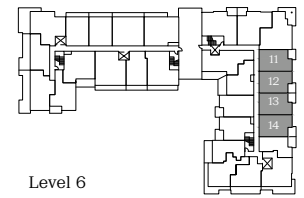
Total: 652 Sq Ft

QUINN

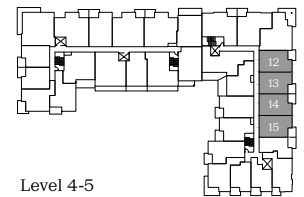
CENTRAL SURREY



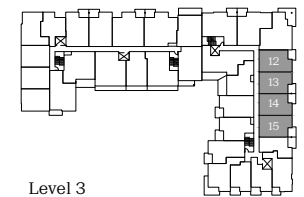
*210, 212, 313, 315, 413, 415, 513, 515, 612 + 614 are reversed



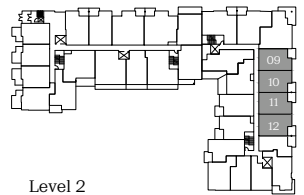
Level 6



Level 4-5



Level 3



Level 2



porte.ca/Quinn

In order to maintain a high standard for our homes, the developer reserves the right to modify specifications, plans or materials without notice. Images and/or renderings (and possible upgrades) may not be an exact representation of the finished buildings. Interior and exterior sizes are approximate and are subject to change. Renderings are artist's concept only. This is not an offering for sale, any such offering can only be made with a Disclosure Statement. E.&O.E.

porte⁷
homes