

Plan A1a

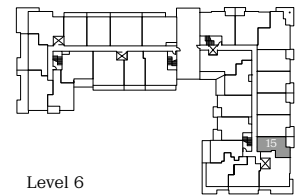
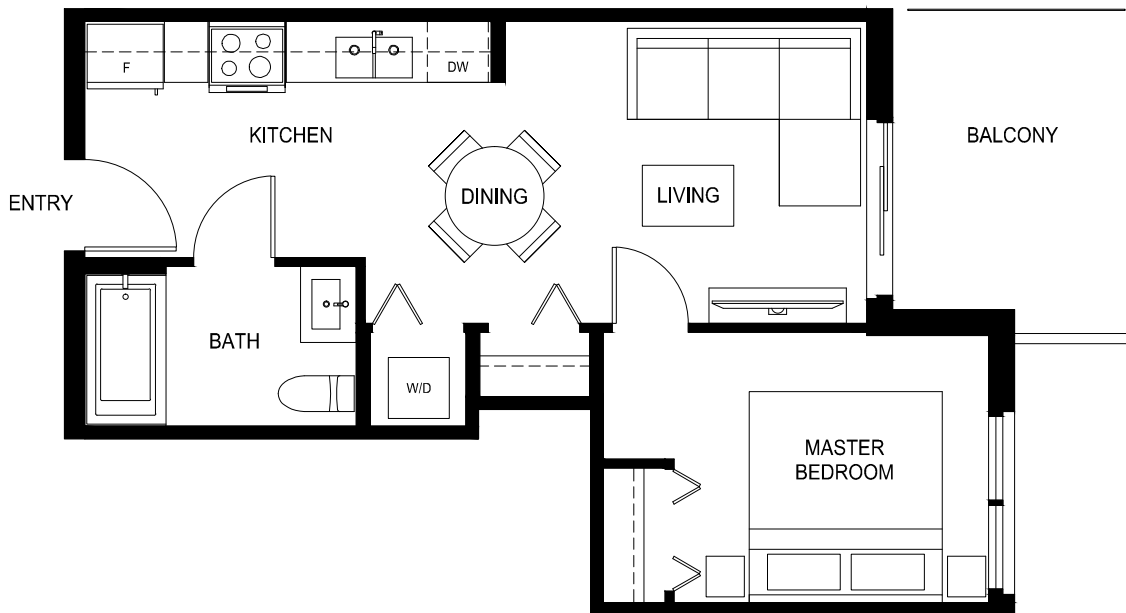
1 Bed, 1 Bath

Interior: 463 Sq Ft / Exterior: 67 Sq Ft

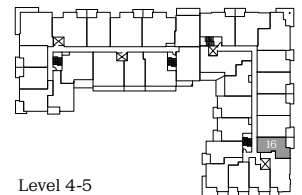
Total: 530 Sq Ft

QUINN

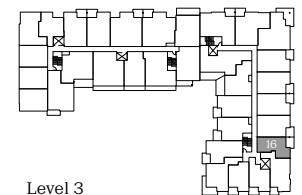
CENTRAL SURREY



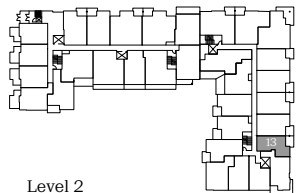
Level 6



Level 4-5



Level 3



Level 2



porte.ca/Quinn

In order to maintain a high standard for our homes, the developer reserves the right to modify specifications, plans or materials without notice. Images and/or renderings (and possible upgrades) may not be an exact representation of the finished buildings. Interior and exterior sizes are approximate and are subject to change. Renderings are artist's concept only. This is not an offering for sale, any such offering can only be made with a Disclosure Statement. E.&O.E.

porte⁷
homes

Plan A2

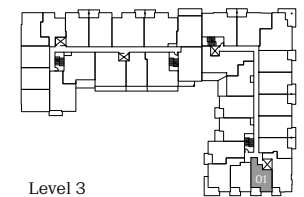
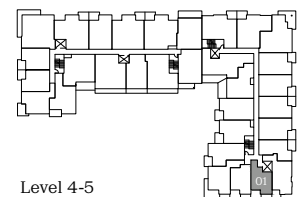
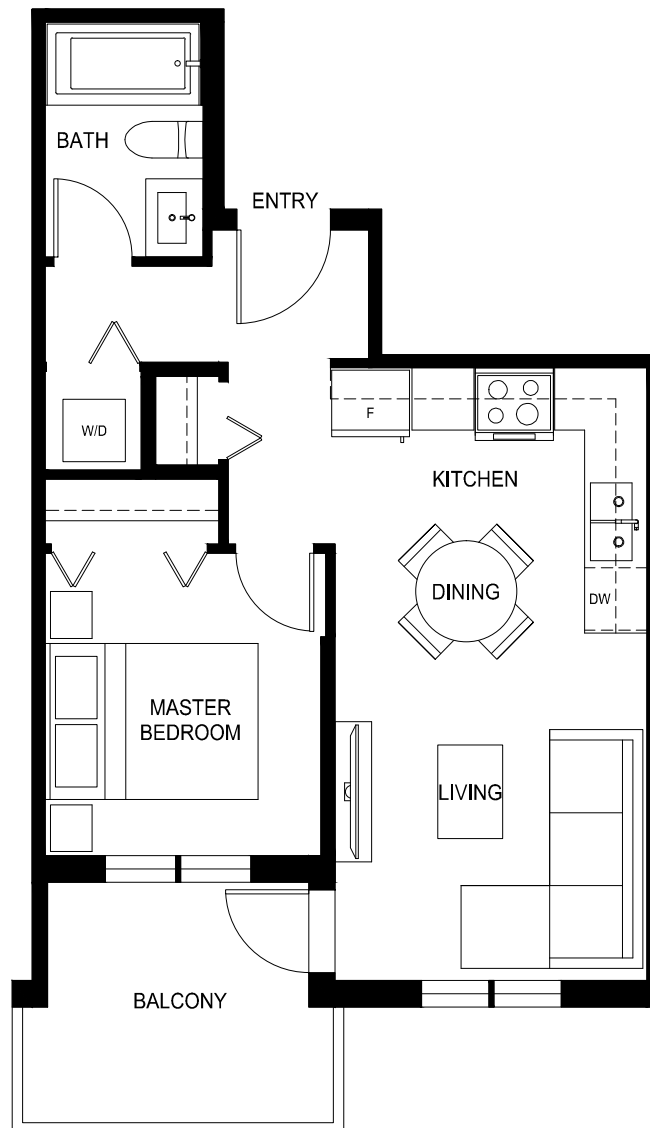
1 Bed, 1 Bath

Interior: 467 Sq Ft / Exterior: 63 Sq Ft

Total: 530 Sq Ft

QUINN

CENTRAL SURREY



porte.ca/Quinn

In order to maintain a high standard for our homes, the developer reserves the right to modify specifications, plans or materials without notice. Images and/or renderings (and possible upgrades) may not be an exact representation of the finished buildings. Interior and exterior sizes are approximate and are subject to change. Renderings are artist's concept only. This is not an offering for sale, any such offering can only be made with a Disclosure Statement. E.&O.E.

porte⁷
homes

Plan A3

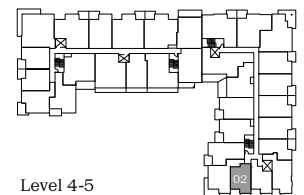
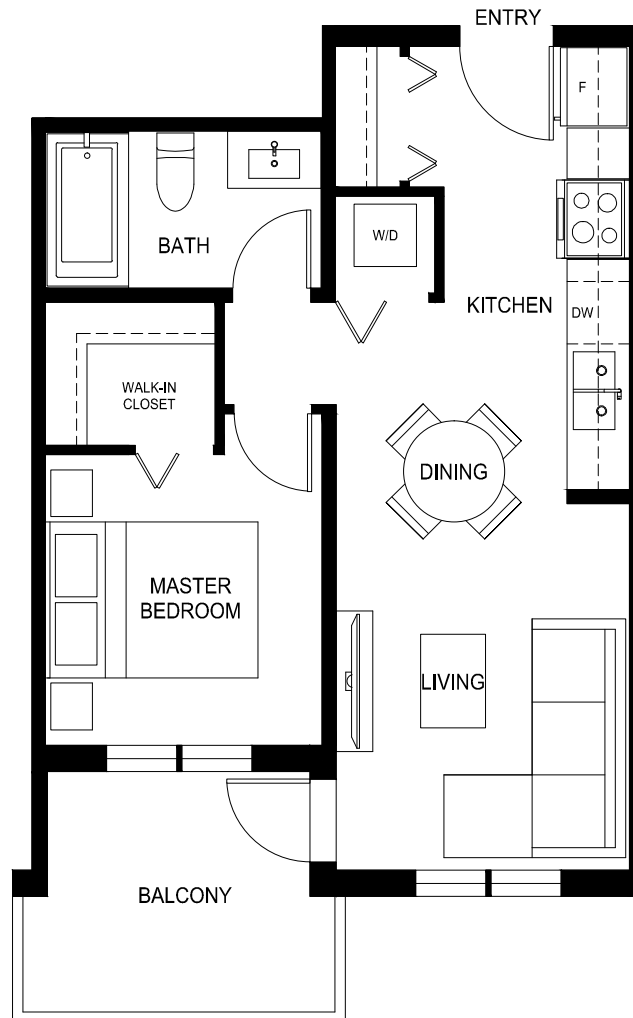
1 Bed, 1 Bath

Interior: 471 Sq Ft / Exterior: 60 Sq Ft

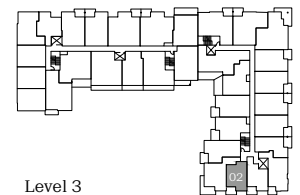
Total: 531 Sq Ft

QUINN

CENTRAL SURREY



Level 4-5



Level 3



porte.ca/Quinn

In order to maintain a high standard for our homes, the developer reserves the right to modify specifications, plans or materials without notice. Images and/or renderings (and possible upgrades) may not be an exact representation of the finished buildings. Interior and exterior sizes are approximate and are subject to change. Renderings are artist's concept only. This is not an offering for sale, any such offering can only be made with a Disclosure Statement. E.&O.E.

porte⁷
homes

Plan A4

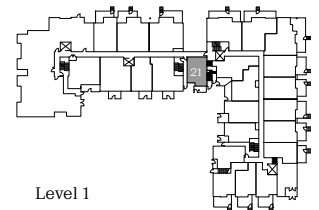
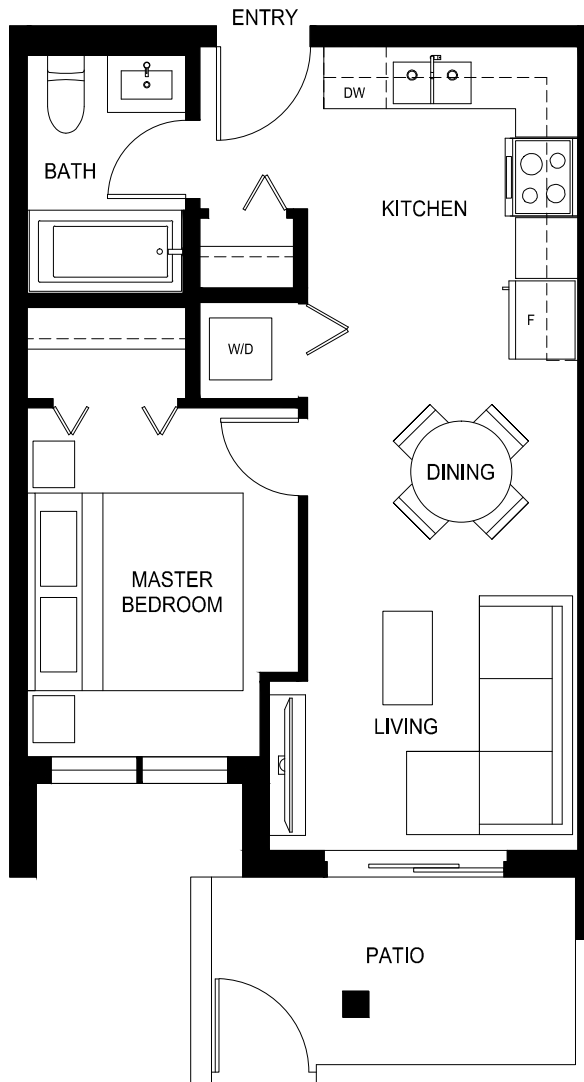
1 Bed, 1 Bath

Interior: 474 Sq Ft / Exterior: 71 Sq Ft

Total: 545 Sq Ft

QUINN

CENTRAL SURREY



Level 1



porte.ca/Quinn

In order to maintain a high standard for our homes, the developer reserves the right to modify specifications, plans or materials without notice. Images and/or renderings (and possible upgrades) may not be an exact representation of the finished buildings. Interior and exterior sizes are approximate and are subject to change. Renderings are artist's concept only. This is not an offering for sale, any such offering can only be made with a Disclosure Statement. E.&O.E.

porte⁷
homes

Plan A5

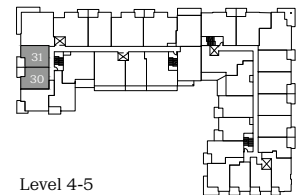
1 Bed, 1 Bath

Interior: 498 Sq Ft / Exterior: 61 Sq Ft

Total: 559 Sq Ft

QUINN

CENTRAL SURREY



porte.ca/Quinn

In order to maintain a high standard for our homes, the developer reserves the right to modify specifications, plans or materials without notice. Images and/or renderings (and possible upgrades) may not be an exact representation of the finished buildings. Interior and exterior sizes are approximate and are subject to change. Renderings are artist's concept only. This is not an offering for sale, any such offering can only be made with a Disclosure Statement. E.&O.E.

porte⁷
homes

Plan A6

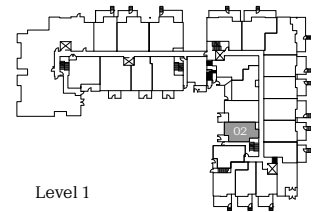
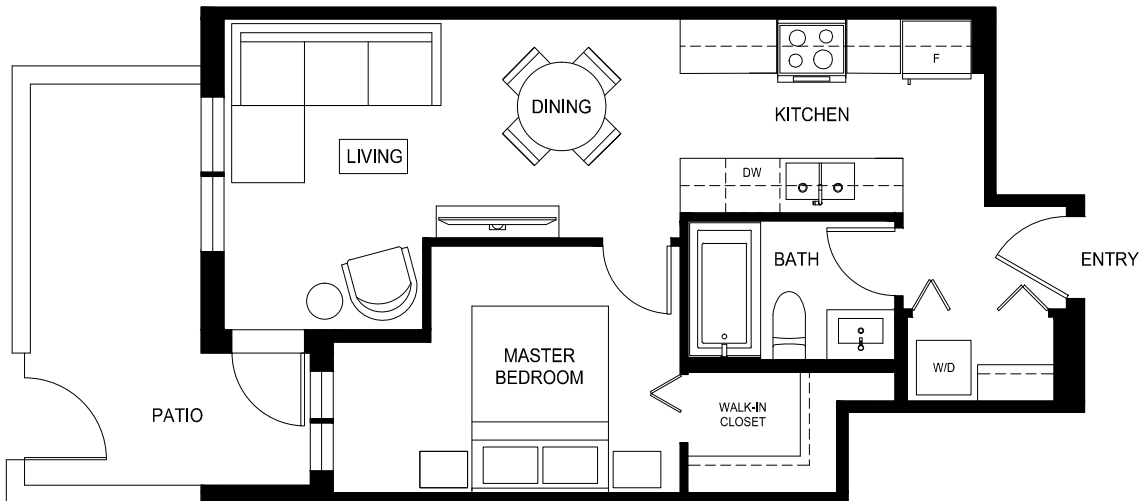
1 Bed, 1 Bath

Interior: 499 Sq Ft / Exterior: 113 Sq Ft

Total: 612 Sq Ft

QUINN

CENTRAL SURREY



porte.ca/Quinn

In order to maintain a high standard for our homes, the developer reserves the right to modify specifications, plans or materials without notice. Images and/or renderings (and possible upgrades) may not be an exact representation of the finished buildings. Interior and exterior sizes are approximate and are subject to change. Renderings are artist's concept only. This is not an offering for sale, any such offering can only be made with a Disclosure Statement. E.&O.E.

porte⁷
homes

Plan A7a

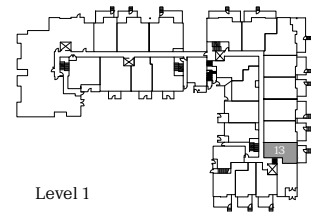
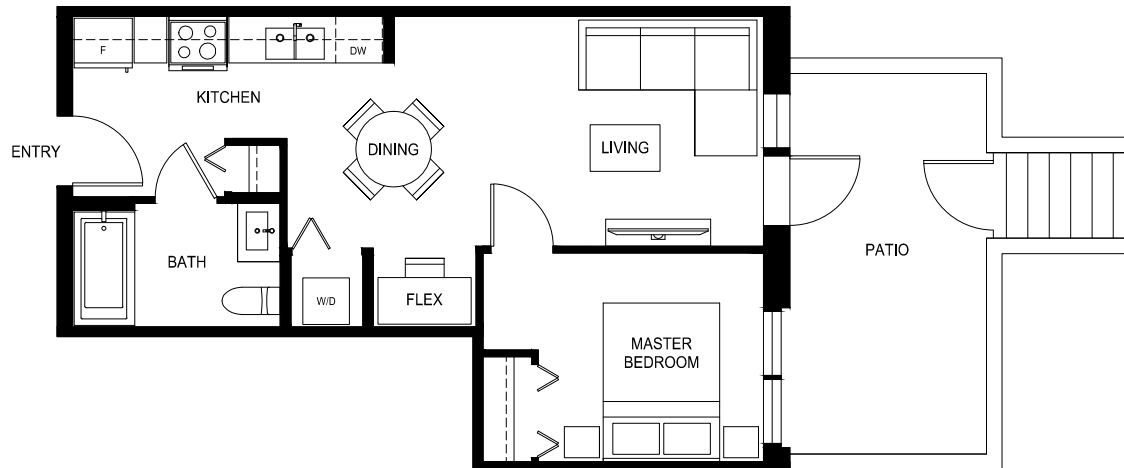
1 Bed + Flex, 1 Bath

Interior: 504 Sq Ft / Exterior: 137 Sq Ft

Total: 641 Sq Ft

QUINN

CENTRAL SURREY



porte.ca/Quinn

In order to maintain a high standard for our homes, the developer reserves the right to modify specifications, plans or materials without notice. Images and/or renderings (and possible upgrades) may not be an exact representation of the finished buildings. Interior and exterior sizes are approximate and are subject to change. Renderings are artist's concept only. This is not an offering for sale, any such offering can only be made with a Disclosure Statement. E.&O.E.

porte⁷
homes

Plan A8a

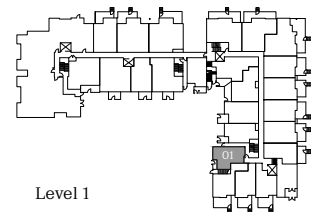
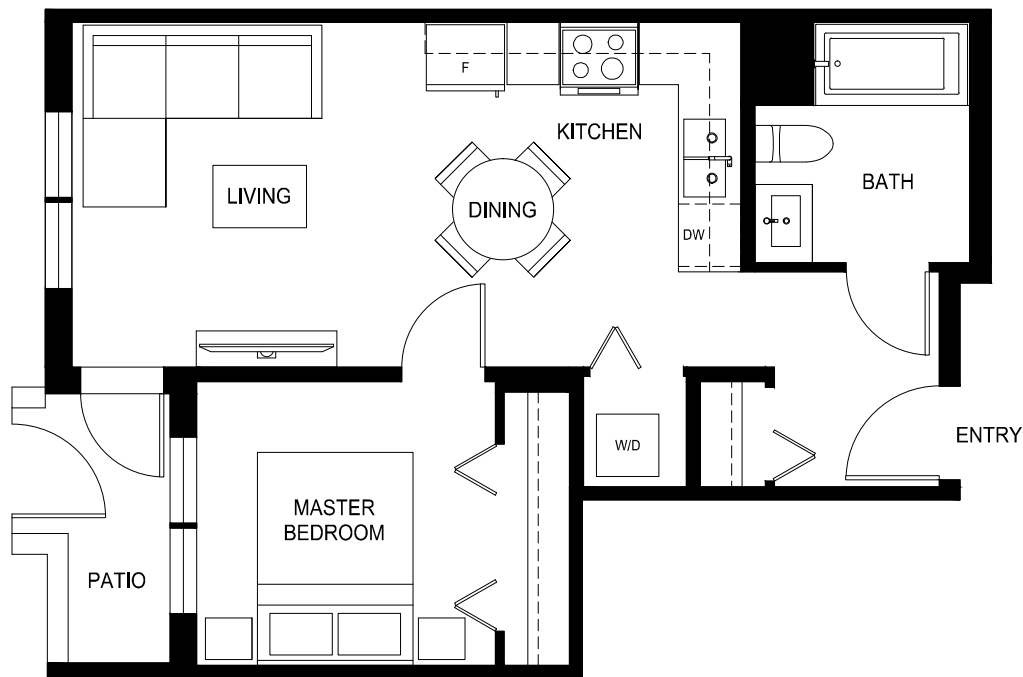
1 Bed, 1 Bath

Interior: 517 Sq Ft / Exterior: 60 Sq Ft

Total: 577 Sq Ft

QUINN

CENTRAL SURREY



porte.ca/Quinn

In order to maintain a high standard for our homes, the developer reserves the right to modify specifications, plans or materials without notice. Images and/or renderings (and possible upgrades) may not be an exact representation of the finished buildings. Interior and exterior sizes are approximate and are subject to change. Renderings are artist's concept only. This is not an offering for sale, any such offering can only be made with a Disclosure Statement. E.&O.E.

porte⁷
homes

Plan A9a

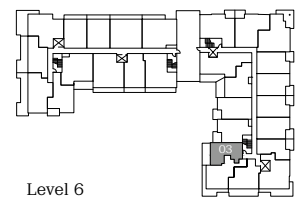
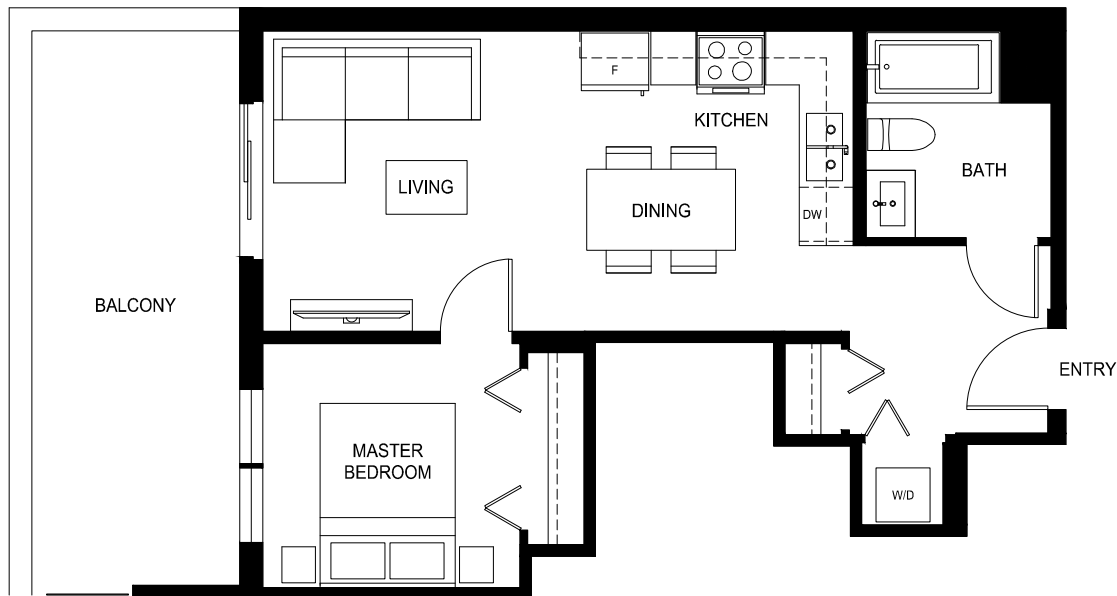
1 Bed, 1 Bath

Interior: 533 Sq Ft / Exterior: 150 Sq Ft

Total: 683 Sq Ft

QUINN

CENTRAL SURREY



porte.ca/Quinn

In order to maintain a high standard for our homes, the developer reserves the right to modify specifications, plans or materials without notice. Images and/or renderings (and possible upgrades) may not be an exact representation of the finished buildings. Interior and exterior sizes are approximate and are subject to change. Renderings are artist's concept only. This is not an offering for sale, any such offering can only be made with a Disclosure Statement. E.&O.E.

porte⁷
homes

Plan A10

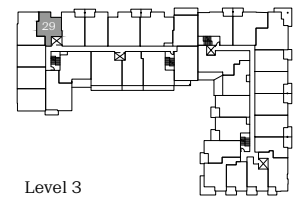
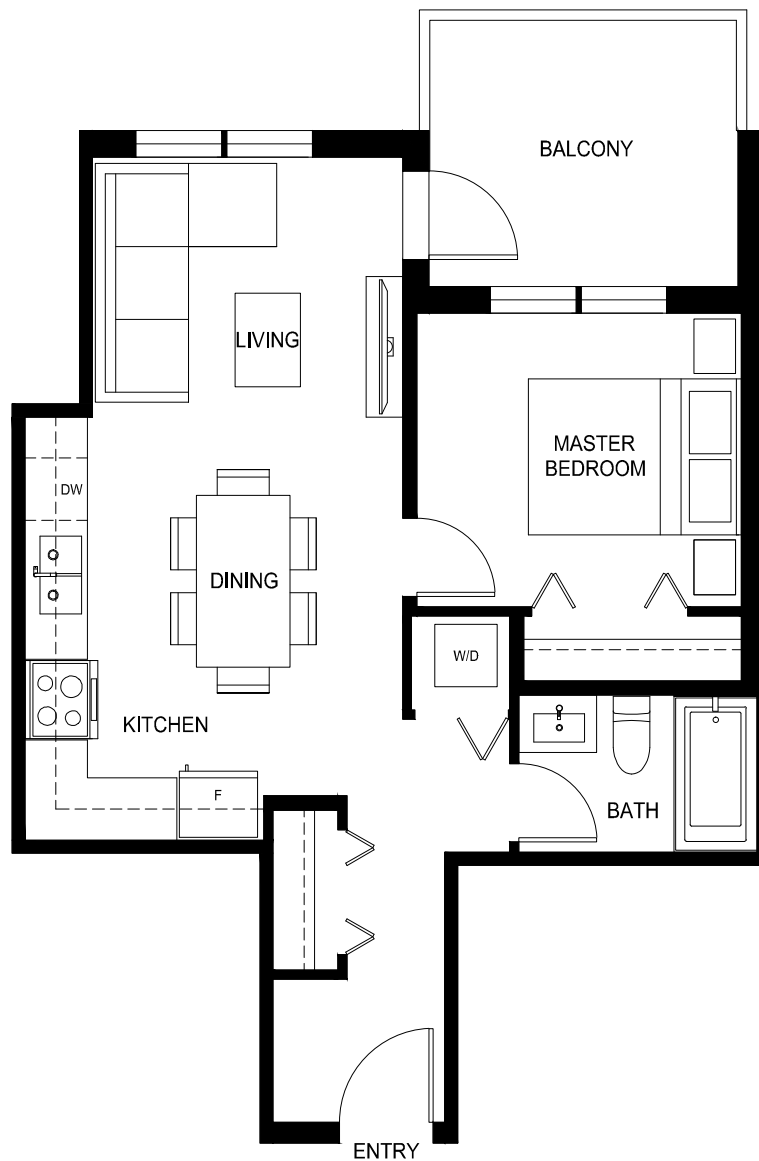
1 Bed, 1 Bath

Interior: 534 Sq Ft / Exterior: 68 Sq Ft

Total: 602 Sq Ft

QUINN

CENTRAL SURREY



porte.ca/Quinn

In order to maintain a high standard for our homes, the developer reserves the right to modify specifications, plans or materials without notice. Images and/or renderings (and possible upgrades) may not be an exact representation of the finished buildings. Interior and exterior sizes are approximate and are subject to change. Renderings are artist's concept only. This is not an offering for sale, any such offering can only be made with a Disclosure Statement. E.&O.E.

porte⁷
homes

Plan A11

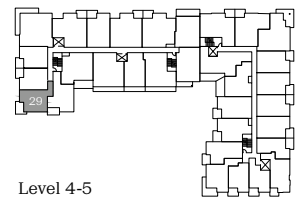
1 Bed + Flex, 1 Bath

Interior: 580 Sq Ft / Exterior: 114 Sq Ft

Total: 694 Sq Ft

QUINN

CENTRAL SURREY



Level 4-5



porte.ca/Quinn

In order to maintain a high standard for our homes, the developer reserves the right to modify specifications, plans or materials without notice. Images and/or renderings (and possible upgrades) may not be an exact representation of the finished buildings. Interior and exterior sizes are approximate and are subject to change. Renderings are artist's concept only. This is not an offering for sale, any such offering can only be made with a Disclosure Statement. E.&O.E.

porte⁷
homes

Plan A12a

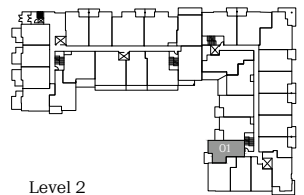
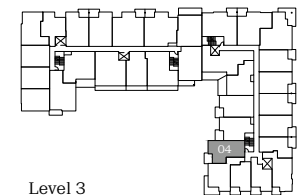
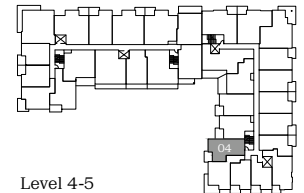
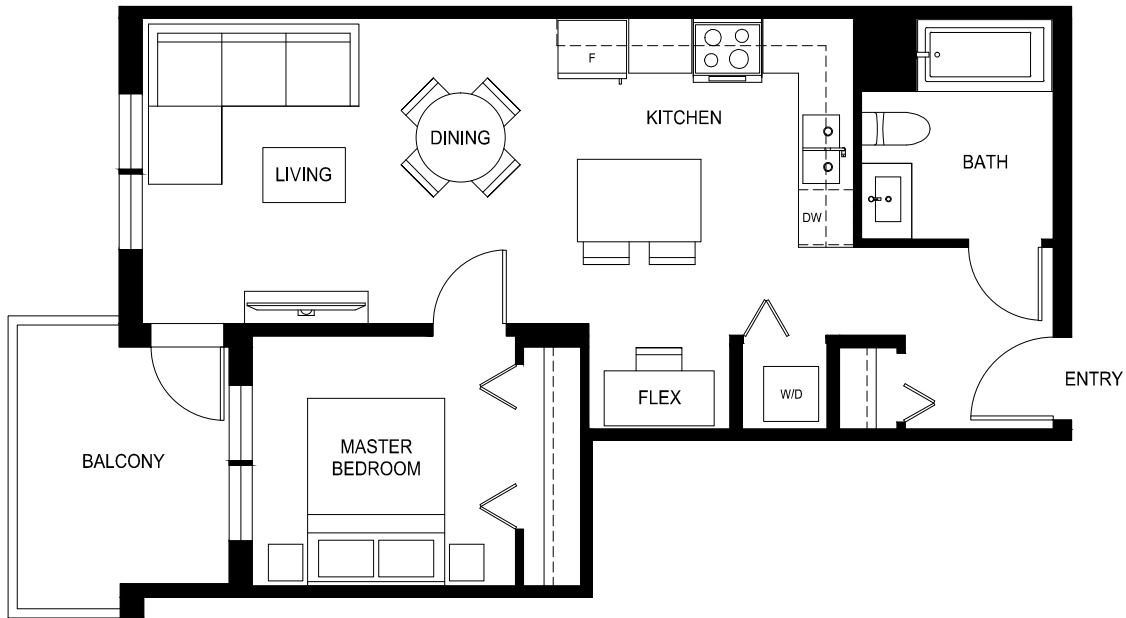
1 Bed + Flex, 1 Bath

Interior: 594 Sq Ft / Exterior: 62 Sq Ft

Total: 659 Sq Ft

QUINN

CENTRAL SURREY



porte.ca/Quinn

In order to maintain a high standard for our homes, the developer reserves the right to modify specifications, plans or materials without notice. Images and/or renderings (and possible upgrades) may not be an exact representation of the finished buildings. Interior and exterior sizes are approximate and are subject to change. Renderings are artist's concept only. This is not an offering for sale, any such offering can only be made with a Disclosure Statement. E.&O.E.

porte⁷
homes

Plan A13

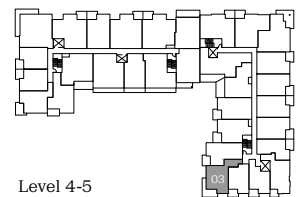
1 Bed, 1 Bath

Interior: 608 Sq Ft / Exterior: 116 Sq Ft

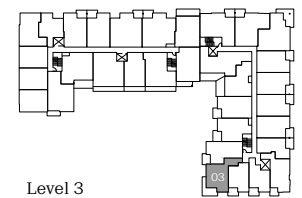
Total: 724 Sq Ft

QUINN

CENTRAL SURREY



Level 4-5



Level 3



porte.ca/Quinn

In order to maintain a high standard for our homes, the developer reserves the right to modify specifications, plans or materials without notice. Images and/or renderings (and possible upgrades) may not be an exact representation of the finished buildings. Interior and exterior sizes are approximate and are subject to change. Renderings are artist's concept only. This is not an offering for sale, any such offering can only be made with a Disclosure Statement. E.&O.E.

porte⁷
homes

Plan A14

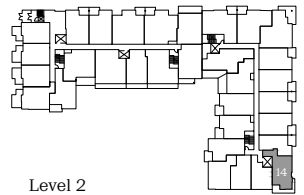
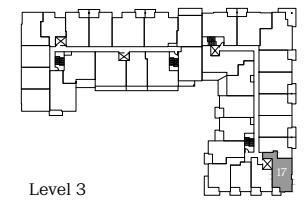
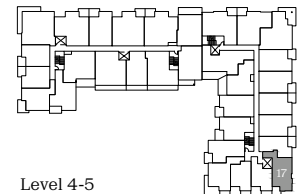
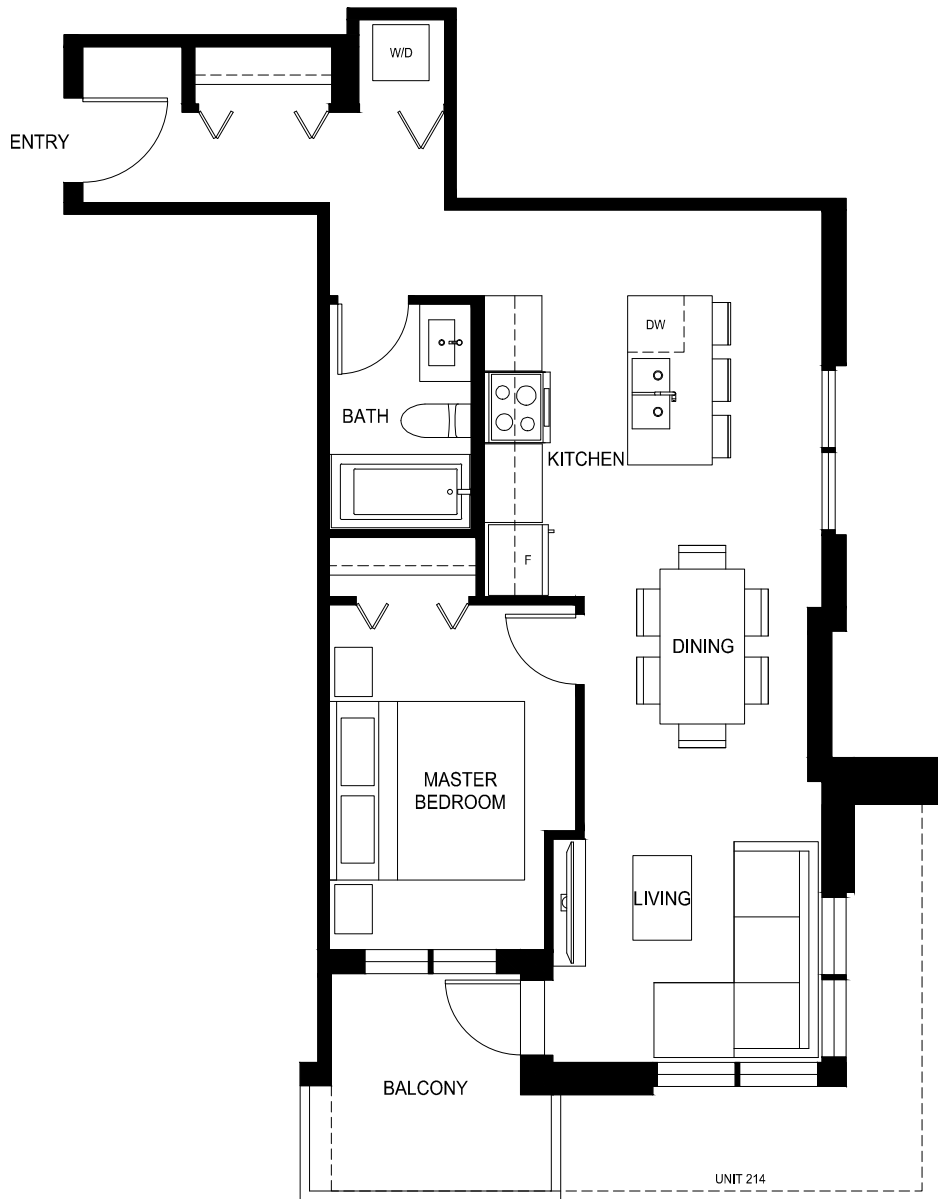
1 Bed, 1 Bath

Interior: 630 Sq Ft / Exterior: 50-127 Sq Ft

Total: 680-757 Sq Ft

QUINN

CENTRAL SURREY



porte.ca/Quinn

In order to maintain a high standard for our homes, the developer reserves the right to modify specifications, plans or materials without notice. Images and/or renderings (and possible upgrades) may not be an exact representation of the finished buildings. Interior and exterior sizes are approximate and are subject to change. Renderings are artist's concept only. This is not an offering for sale, any such offering can only be made with a Disclosure Statement. E.&O.E.

porte⁷
homes

Plan B1

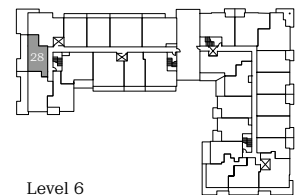
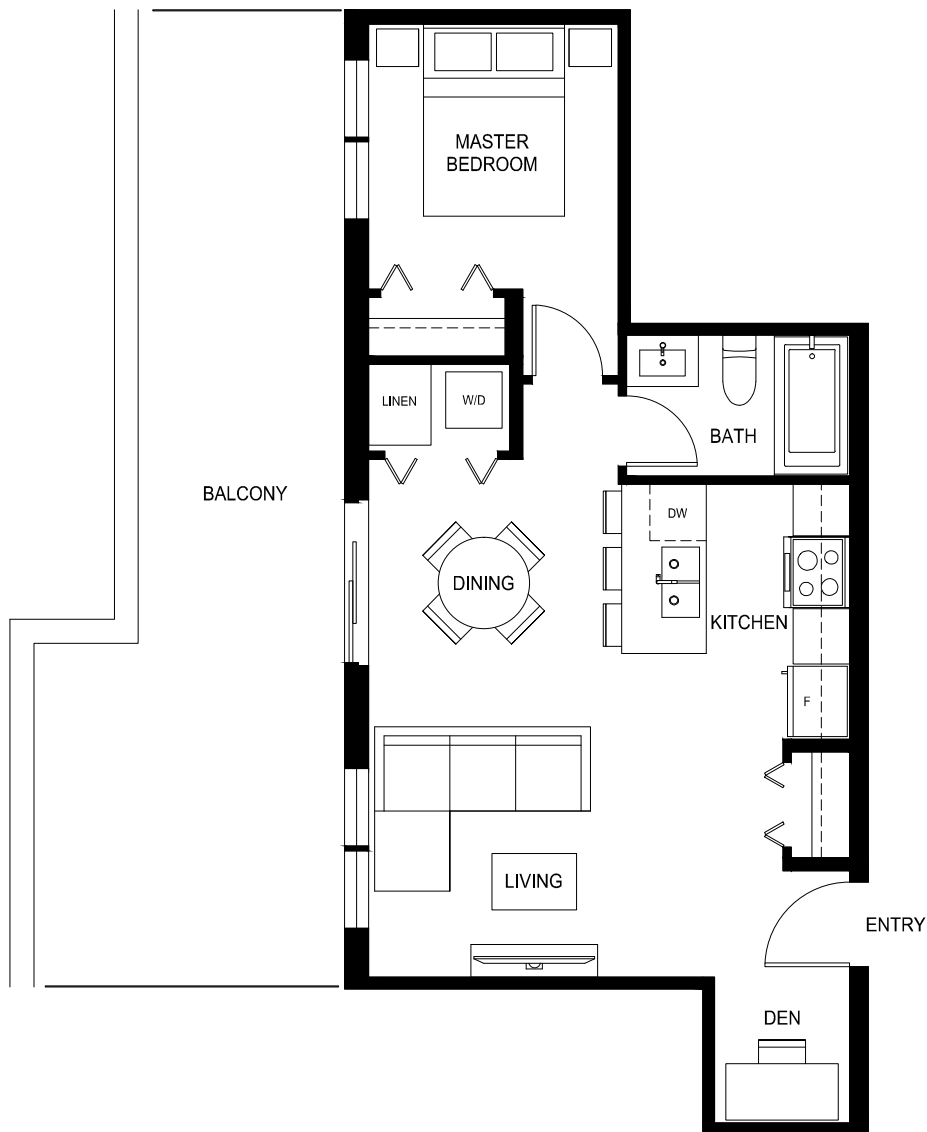
1 Bed + Flex, 1 Bath

Interior: 561 Sq Ft / Exterior: 285 Sq Ft

Total: 846 Sq Ft

QUINN

CENTRAL SURREY



porte.ca/Quinn

In order to maintain a high standard for our homes, the developer reserves the right to modify specifications, plans or materials without notice. Images and/or renderings (and possible upgrades) may not be an exact representation of the finished buildings. Interior and exterior sizes are approximate and are subject to change. Renderings are artist's concept only. This is not an offering for sale, any such offering can only be made with a Disclosure Statement. E.&O.E.

porte⁷
homes

Plan B2a

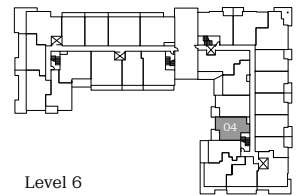
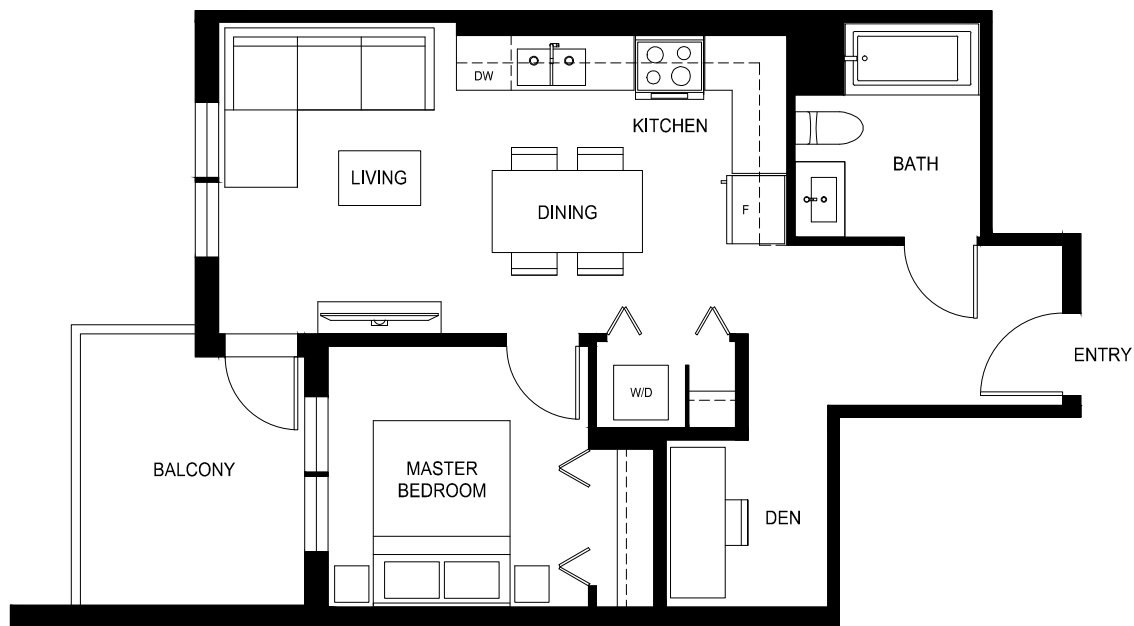
1 Bed + Den, 1 Bath

Interior: 580 Sq Ft / Exterior: 63 Sq Ft

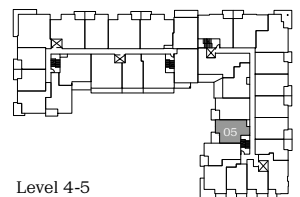
Total: 643 Sq Ft

QUINN

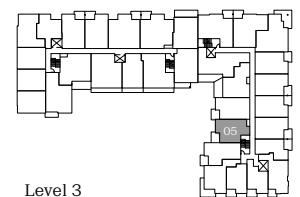
CENTRAL SURREY



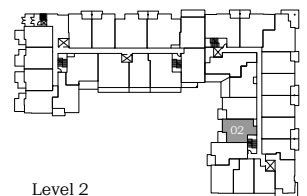
Level 6



Level 4-5



Level 3



Level 2



porte.ca/Quinn

In order to maintain a high standard for our homes, the developer reserves the right to modify specifications, plans or materials without notice. Images and/or renderings (and possible upgrades) may not be an exact representation of the finished buildings. Interior and exterior sizes are approximate and are subject to change. Renderings are artist's concept only. This is not an offering for sale, any such offering can only be made with a Disclosure Statement. E.&O.E.

porte⁷
homes

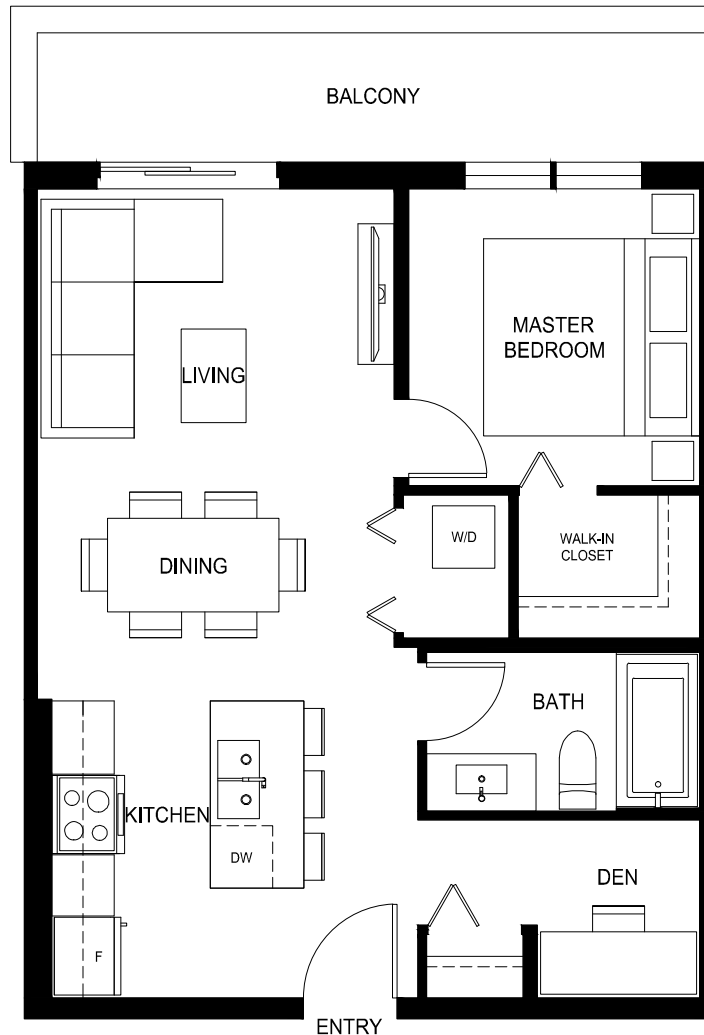
Plan B3

1 Bed + Den, 1 Bath

Interior: 588 Sq Ft / Exterior: 81 Sq Ft

Total: 669 Sq Ft

QUINN
CENTRAL SURREY



Level 6



porte.ca/Quinn

In order to maintain a high standard for our homes, the developer reserves the right to modify specifications, plans or materials without notice. Images and/or renderings (and possible upgrades) may not be an exact representation of the finished buildings. Interior and exterior sizes are approximate and are subject to change. Renderings are artist's concept only. This is not an offering for sale, any such offering can only be made with a Disclosure Statement. E.&O.E.

porte⁷
homes

Plan B4

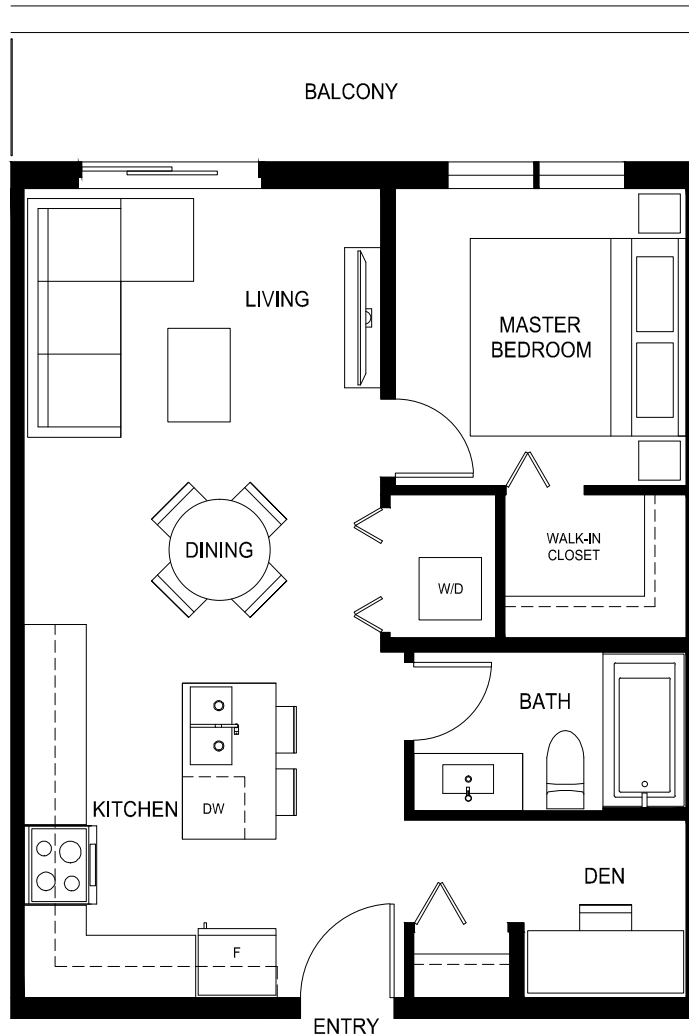
1 Bed + Den, 1 Bath

Interior: 589 Sq Ft / Exterior: 84 Sq Ft

Total: 673 Sq Ft

QUINN

CENTRAL SURREY



porte.ca/Quinn

In order to maintain a high standard for our homes, the developer reserves the right to modify specifications, plans or materials without notice. Images and/or renderings (and possible upgrades) may not be an exact representation of the finished buildings. Interior and exterior sizes are approximate and are subject to change. Renderings are artist's concept only. This is not an offering for sale, any such offering can only be made with a Disclosure Statement. E.&O.E.

porte⁷
homes

Plan B5

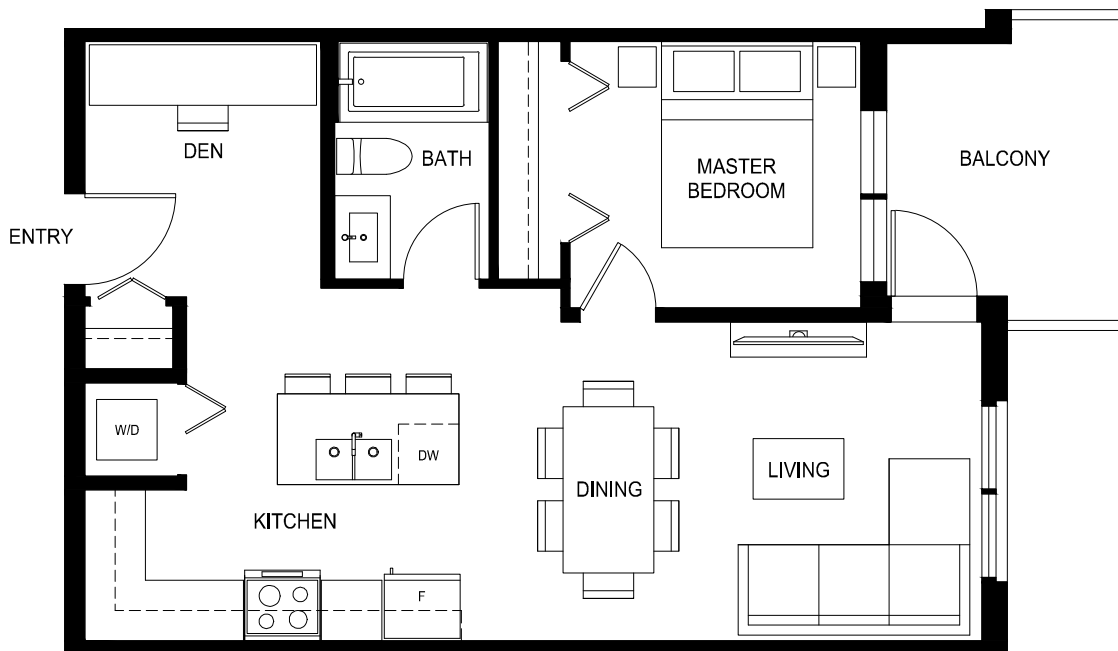
1 Bed + Den, 1 Bath

Interior: 591 Sq Ft / Exterior: 61 Sq Ft

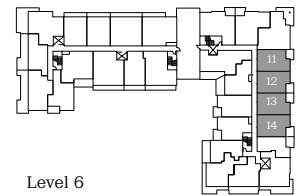
Total: 652 Sq Ft

QUINN

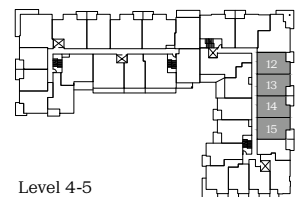
CENTRAL SURREY



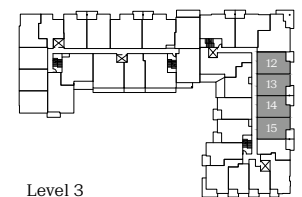
*210, 212, 313, 315, 413, 415, 513, 515, 612 + 614 are reversed



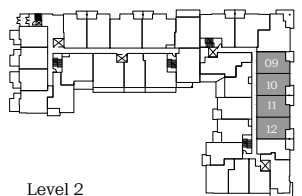
Level 6



Level 4-5



Level 3



Level 2



porte.ca/Quinn

In order to maintain a high standard for our homes, the developer reserves the right to modify specifications, plans or materials without notice. Images and/or renderings (and possible upgrades) may not be an exact representation of the finished buildings. Interior and exterior sizes are approximate and are subject to change. Renderings are artist's concept only. This is not an offering for sale, any such offering can only be made with a Disclosure Statement. E.&O.E.

porte⁷
homes

Plan B6

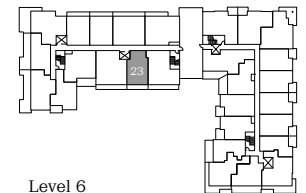
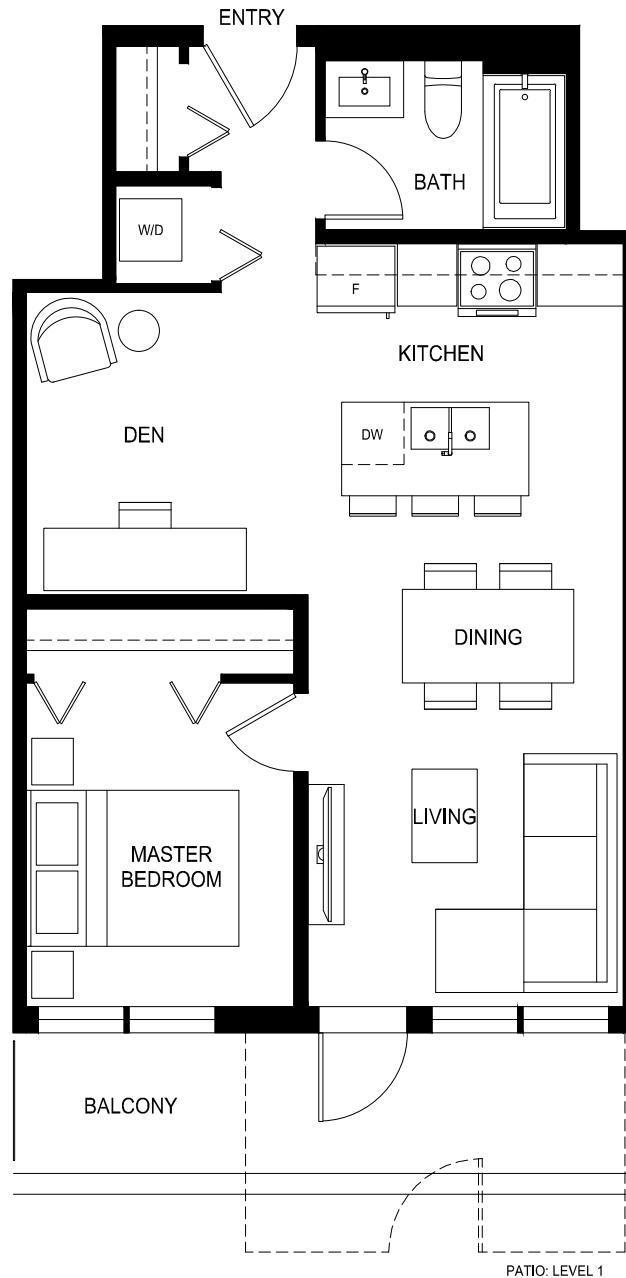
1 Bed + Den, 1 Bath

Interior: 593 Sq Ft / Exterior: 83-100 Sq Ft

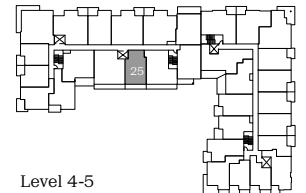
Total: 676-693 Sq Ft

QUINN

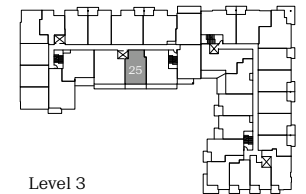
CENTRAL SURREY



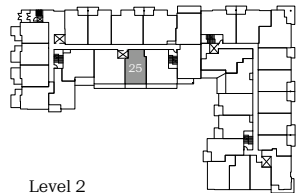
Level 6



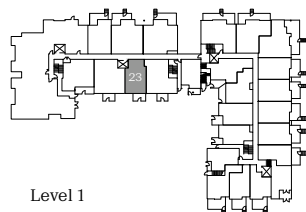
Level 4-5



Level 3



Level 2



Level 1



porte.ca/Quinn

In order to maintain a high standard for our homes, the developer reserves the right to modify specifications, plans or materials without notice. Images and/or renderings (and possible upgrades) may not be an exact representation of the finished buildings. Interior and exterior sizes are approximate and are subject to change. Renderings are artist's concept only. This is not an offering for sale, any such offering can only be made with a Disclosure Statement. E.&O.E.

porte⁷
homes

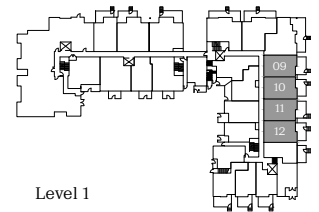
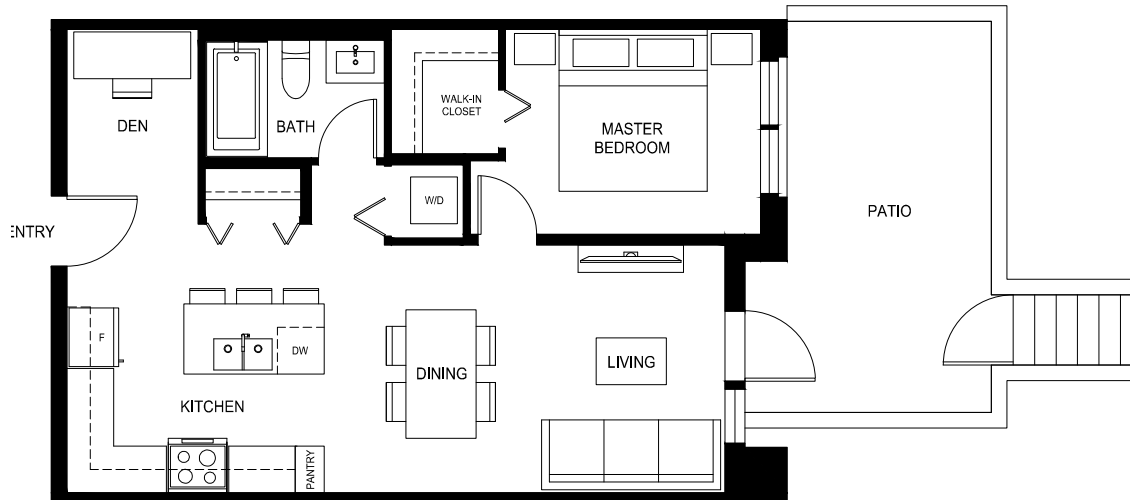
Plan B7

1 Bed + Den, 1 Bath

Interior: 610 Sq Ft / Exterior: 149-158 Sq Ft

Total: 759-768 Sq Ft

QUINN
CENTRAL SURREY



*110 and 112 are reversed



porte.ca/Quinn

In order to maintain a high standard for our homes, the developer reserves the right to modify specifications, plans or materials without notice. Images and/or renderings (and possible upgrades) may not be an exact representation of the finished buildings. Interior and exterior sizes are approximate and are subject to change. Renderings are artist's concept only. This is not an offering for sale, any such offering can only be made with a Disclosure Statement. E.&O.E.

porte⁷
homes

Plan B8

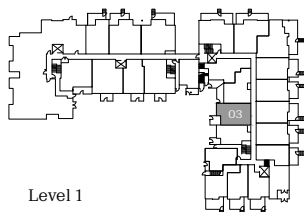
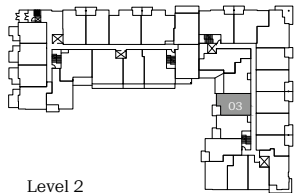
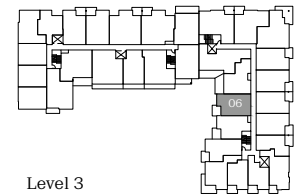
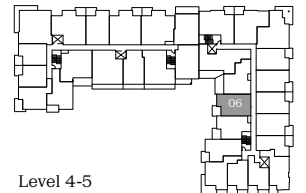
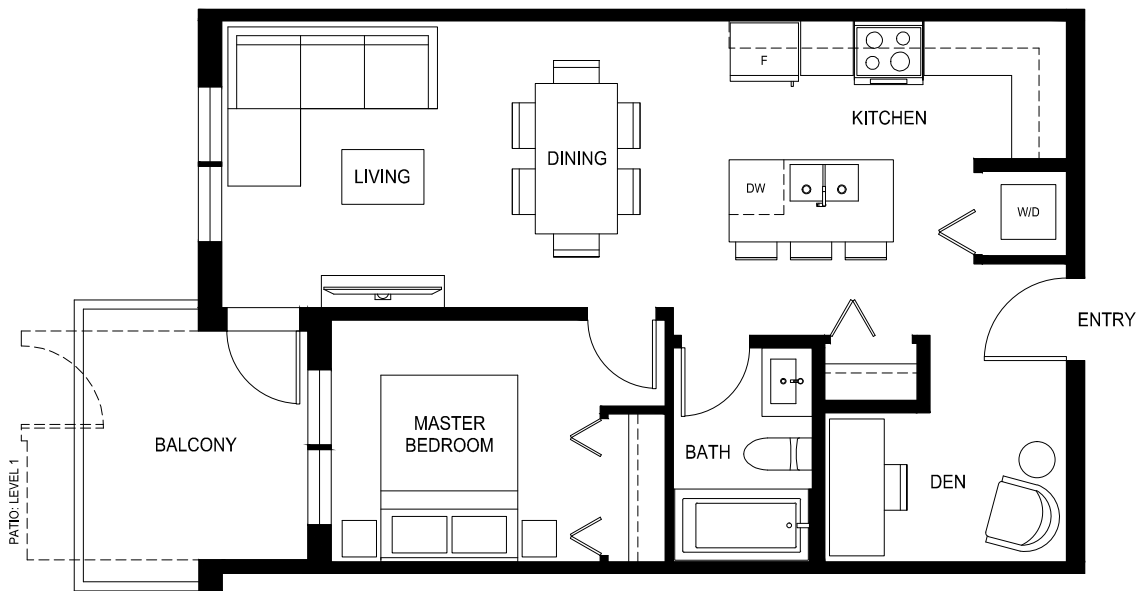
1 Bed + Den, 1 Bath

Interior: 616 Sq Ft / Exterior: 60 Sq Ft

Total: 676 Sq Ft

QUINN

CENTRAL SURREY



porte.ca/Quinn

In order to maintain a high standard for our homes, the developer reserves the right to modify specifications, plans or materials without notice. Images and/or renderings (and possible upgrades) may not be an exact representation of the finished buildings. Interior and exterior sizes are approximate and are subject to change. Renderings are artist's concept only. This is not an offering for sale, any such offering can only be made with a Disclosure Statement. E.&O.E.

porte⁷
homes

Plan B9

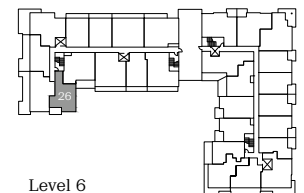
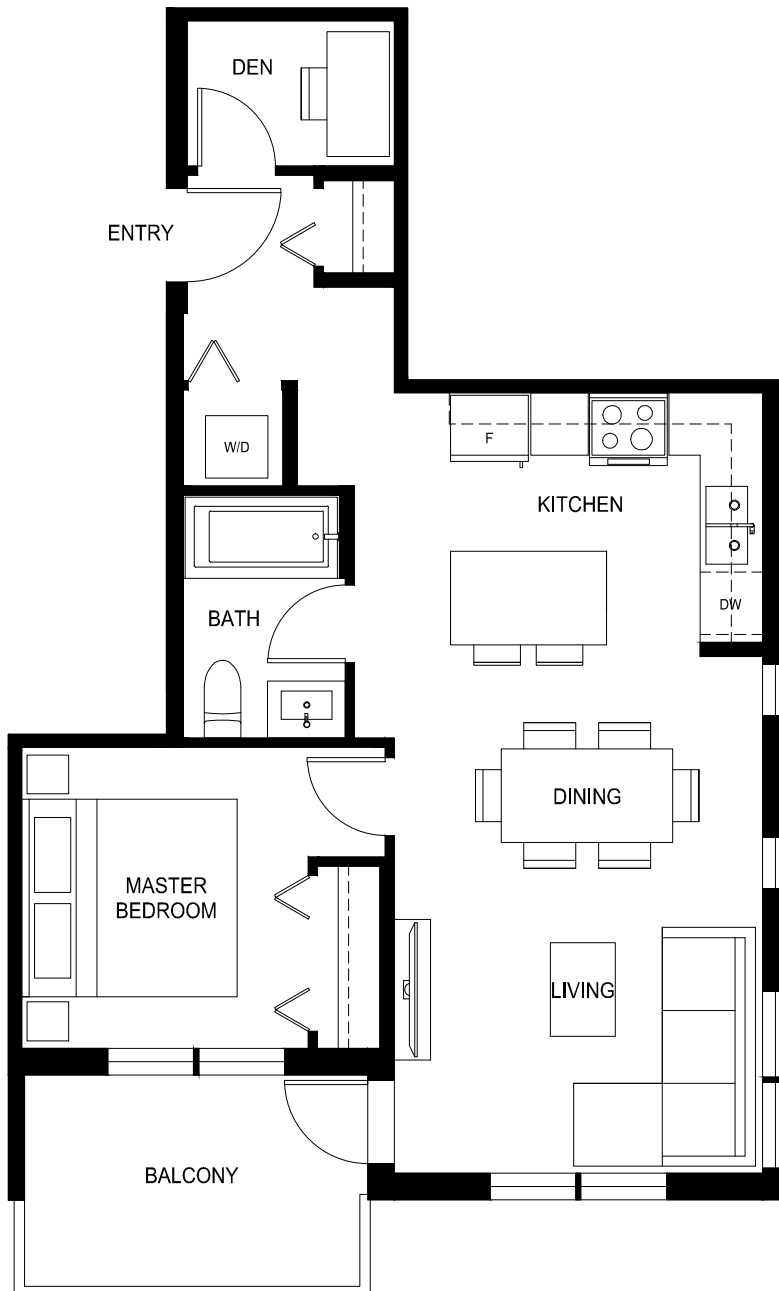
1 Bed + Den, 1 Bath

Interior: 624 Sq Ft / Exterior: 75 Sq Ft

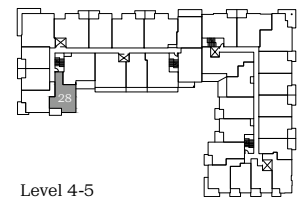
Total: 699 Sq Ft

QUINN

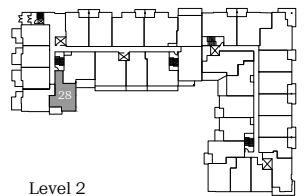
CENTRAL SURREY



Level 6



Level 4-5



Level 2



porte.ca/Quinn

In order to maintain a high standard for our homes, the developer reserves the right to modify specifications, plans or materials without notice. Images and/or renderings (and possible upgrades) may not be an exact representation of the finished buildings. Interior and exterior sizes are approximate and are subject to change. Renderings are artist's concept only. This is not an offering for sale, any such offering can only be made with a Disclosure Statement. E.&O.E.

porte⁷
homes

Plan B10

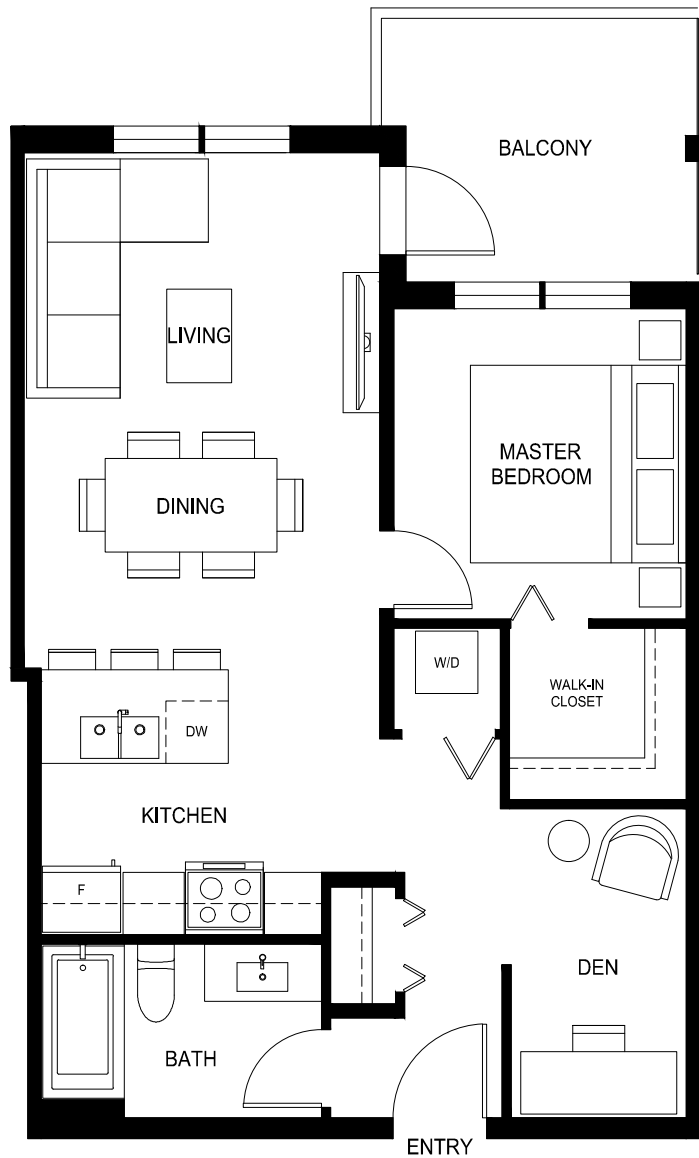
1 Bed + Den, 1 Bath

Interior: 647 Sq Ft / Exterior: 67 Sq Ft

Total: 714 Sq Ft

QUINN

CENTRAL SURREY



porte.ca/Quinn

In order to maintain a high standard for our homes, the developer reserves the right to modify specifications, plans or materials without notice. Images and/or renderings (and possible upgrades) may not be an exact representation of the finished buildings. Interior and exterior sizes are approximate and are subject to change. Renderings are artist's concept only. This is not an offering for sale, any such offering can only be made with a Disclosure Statement. E.&O.E.

porte⁷
homes

Plan B11

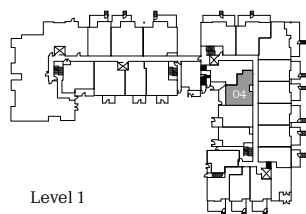
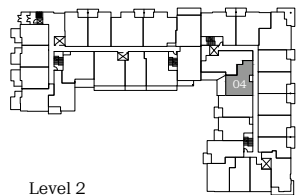
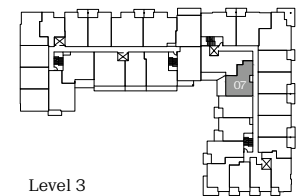
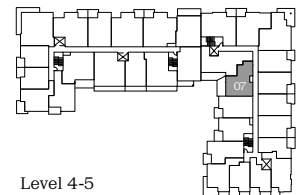
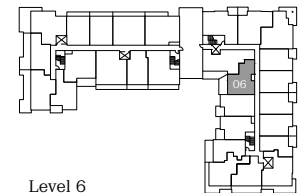
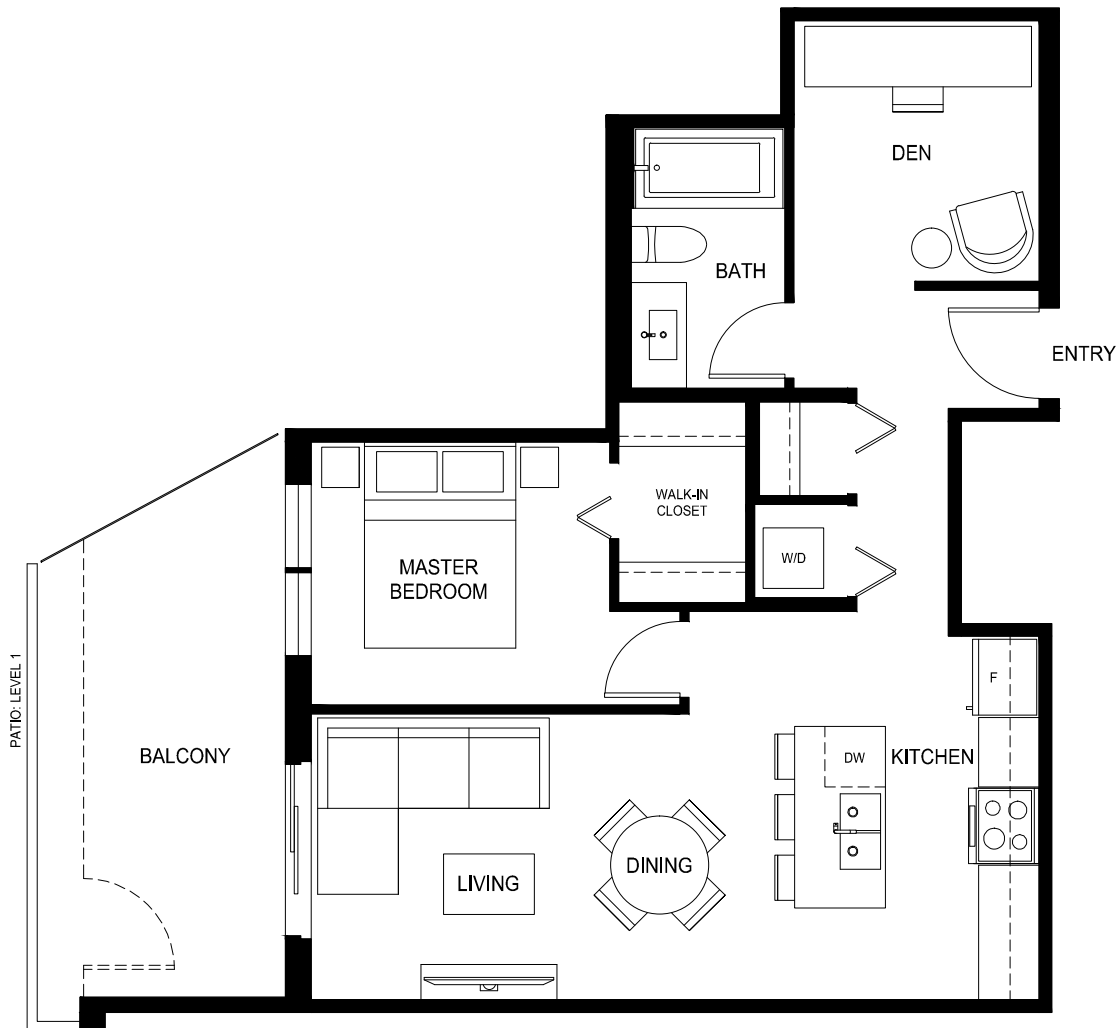
1 Bed + Den, 1 Bath

Interior: 640 Sq Ft / Exterior: 137 Sq Ft

Total: 777 Sq Ft

QUINN

CENTRAL SURREY



porte.ca/Quinn

In order to maintain a high standard for our homes, the developer reserves the right to modify specifications, plans or materials without notice. Images and/or renderings (and possible upgrades) may not be an exact representation of the finished buildings. Interior and exterior sizes are approximate and are subject to change. Renderings are artist's concept only. This is not an offering for sale, any such offering can only be made with a Disclosure Statement. E.&O.E.

porte⁷
homes

Plan B12 (Level 1)

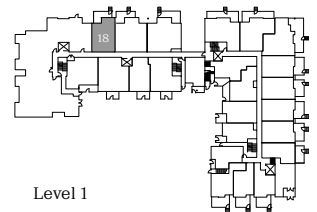
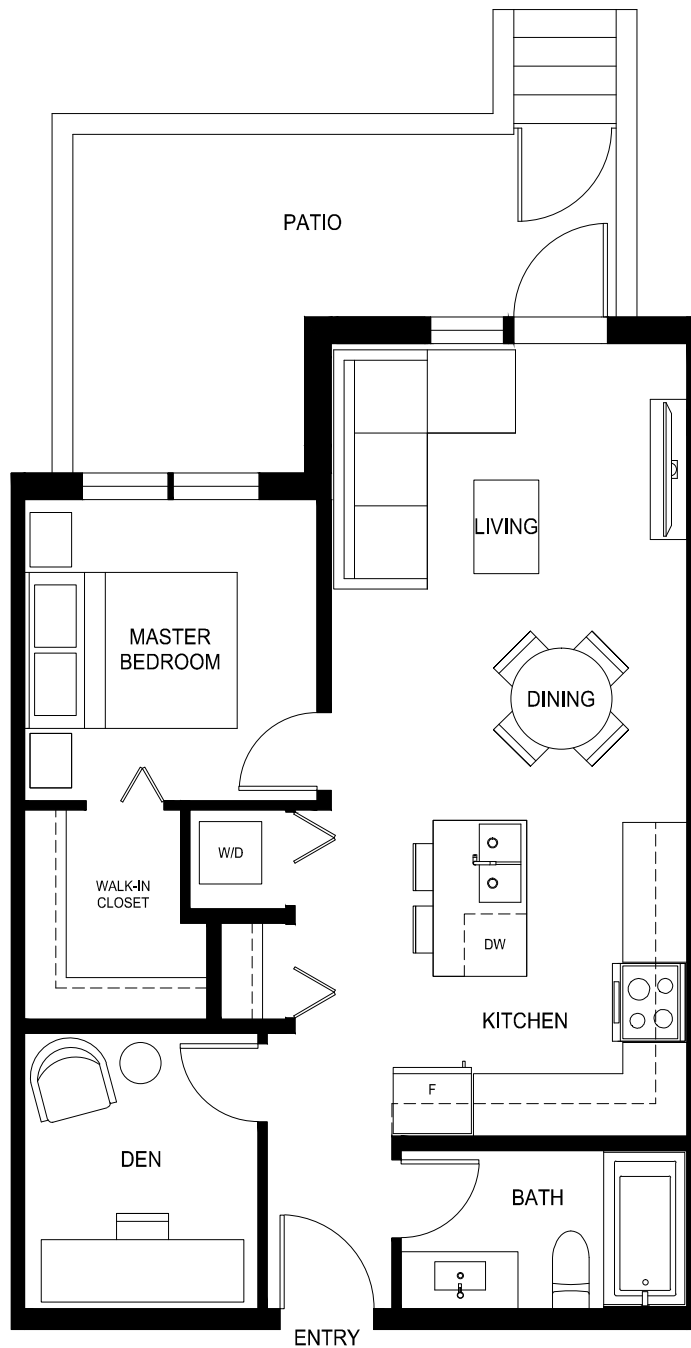
1 Bed + Den, 1 Bath

Interior: 651 Sq Ft / Exterior: 65-141 Sq Ft

Total: 716-792 Sq Ft

QUINN

CENTRAL SURREY



Level 1



porte.ca/Quinn

In order to maintain a high standard for our homes, the developer reserves the right to modify specifications, plans or materials without notice. Images and/or renderings (and possible upgrades) may not be an exact representation of the finished buildings. Interior and exterior sizes are approximate and are subject to change. Renderings are artist's concept only. This is not an offering for sale, any such offering can only be made with a Disclosure Statement. E.&O.E.

porte⁷
homes

Plan B12

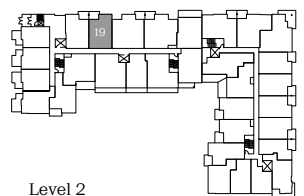
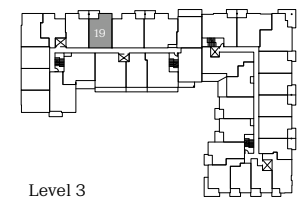
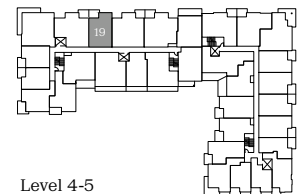
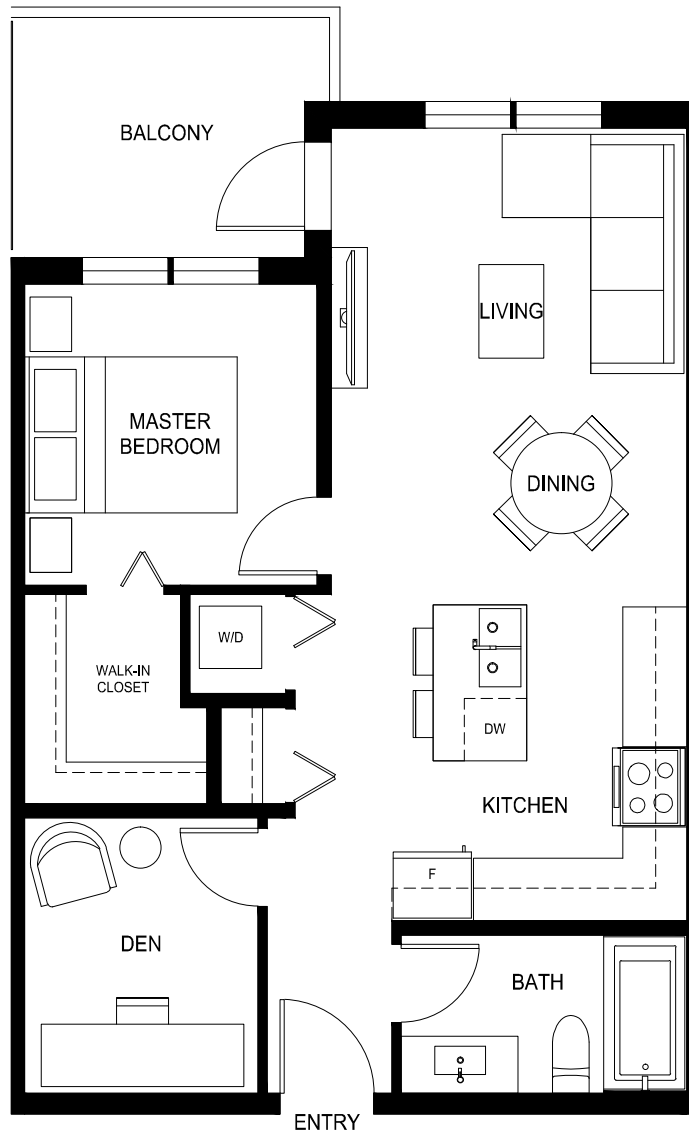
1 Bed + Den, 1 Bath

Interior: 651 Sq Ft / Exterior: 65-141 Sq Ft

Total: 716-792 Sq Ft

QUINN

CENTRAL SURREY



porte.ca/Quinn

In order to maintain a high standard for our homes, the developer reserves the right to modify specifications, plans or materials without notice. Images and/or renderings (and possible upgrades) may not be an exact representation of the finished buildings. Interior and exterior sizes are approximate and are subject to change. Renderings are artist's concept only. This is not an offering for sale, any such offering can only be made with a Disclosure Statement. E.&O.E.

porte⁷
homes

Plan B13

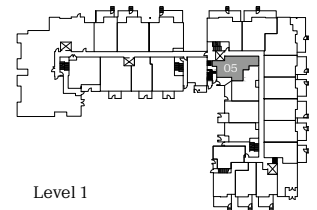
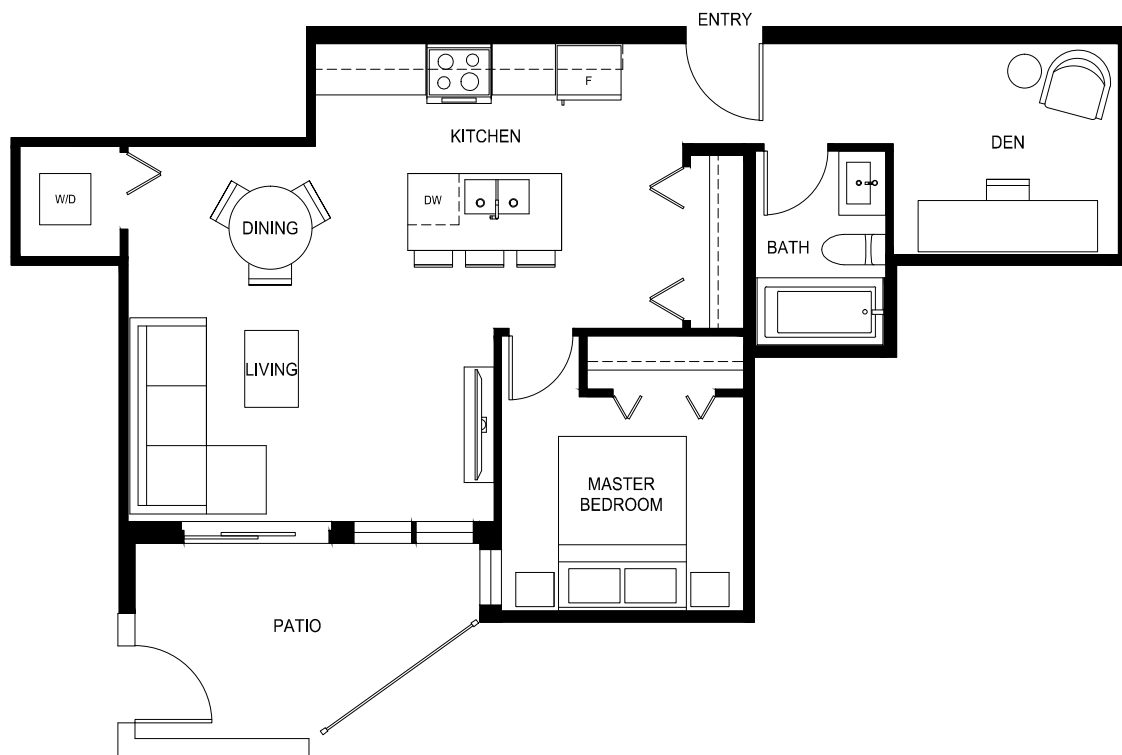
1 Bed + Den, 1 Bath

Interior: 659 Sq Ft / Exterior: 200 Sq Ft

Total: 859 Sq Ft

QUINN

CENTRAL SURREY



porte.ca/Quinn

In order to maintain a high standard for our homes, the developer reserves the right to modify specifications, plans or materials without notice. Images and/or renderings (and possible upgrades) may not be an exact representation of the finished buildings. Interior and exterior sizes are approximate and are subject to change. Renderings are artist's concept only. This is not an offering for sale, any such offering can only be made with a Disclosure Statement. E.&O.E.

porte⁷
homes

Plan B14

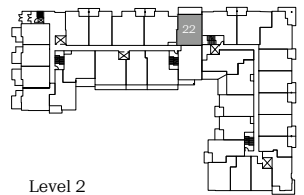
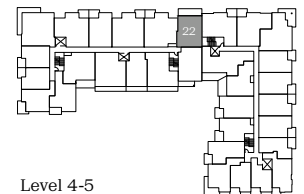
1 Bed + Den, 1 Bath

Interior: 684 Sq Ft / Exterior: 136-147 Sq Ft

Total: 820-831 Sq Ft

QUINN

CENTRAL SURREY



porte.ca/Quinn

In order to maintain a high standard for our homes, the developer reserves the right to modify specifications, plans or materials without notice. Images and/or renderings (and possible upgrades) may not be an exact representation of the finished buildings. Interior and exterior sizes are approximate and are subject to change. Renderings are artist's concept only. This is not an offering for sale, any such offering can only be made with a Disclosure Statement. E.&O.E.

porte⁷
homes

Plan B15

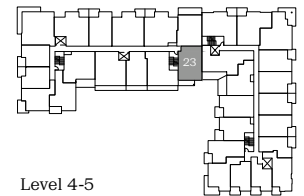
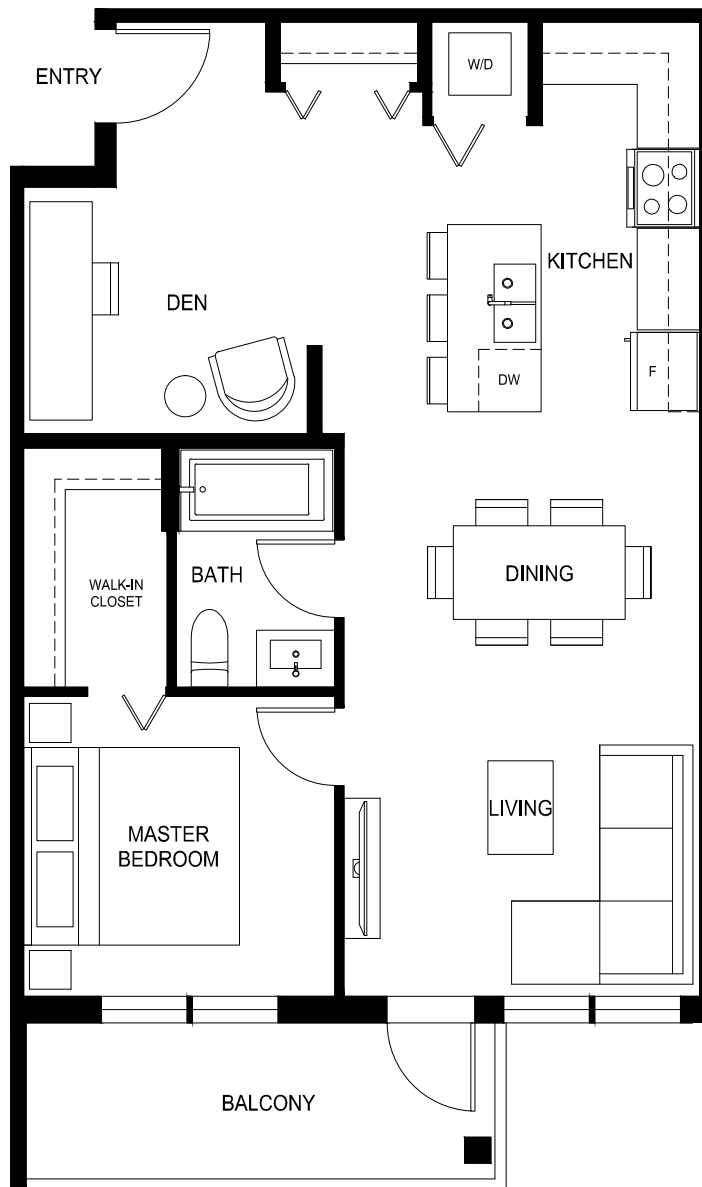
1 Bed + Den, 1 Bath

Interior: 719 Sq Ft / Exterior: 92 Sq Ft

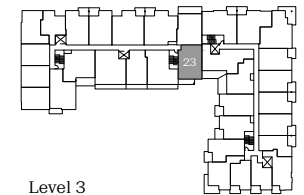
Total: 811 Sq Ft

QUINN

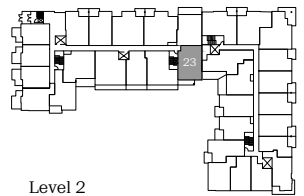
CENTRAL SURREY



Level 4-5



Level 3



Level 2



porte.ca/Quinn

In order to maintain a high standard for our homes, the developer reserves the right to modify specifications, plans or materials without notice. Images and/or renderings (and possible upgrades) may not be an exact representation of the finished buildings. Interior and exterior sizes are approximate and are subject to change. Renderings are artist's concept only. This is not an offering for sale, any such offering can only be made with a Disclosure Statement. E.&O.E.

porte⁷
homes

Plan C1

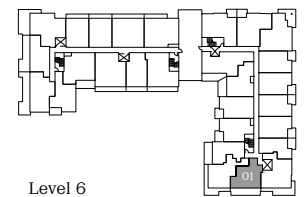
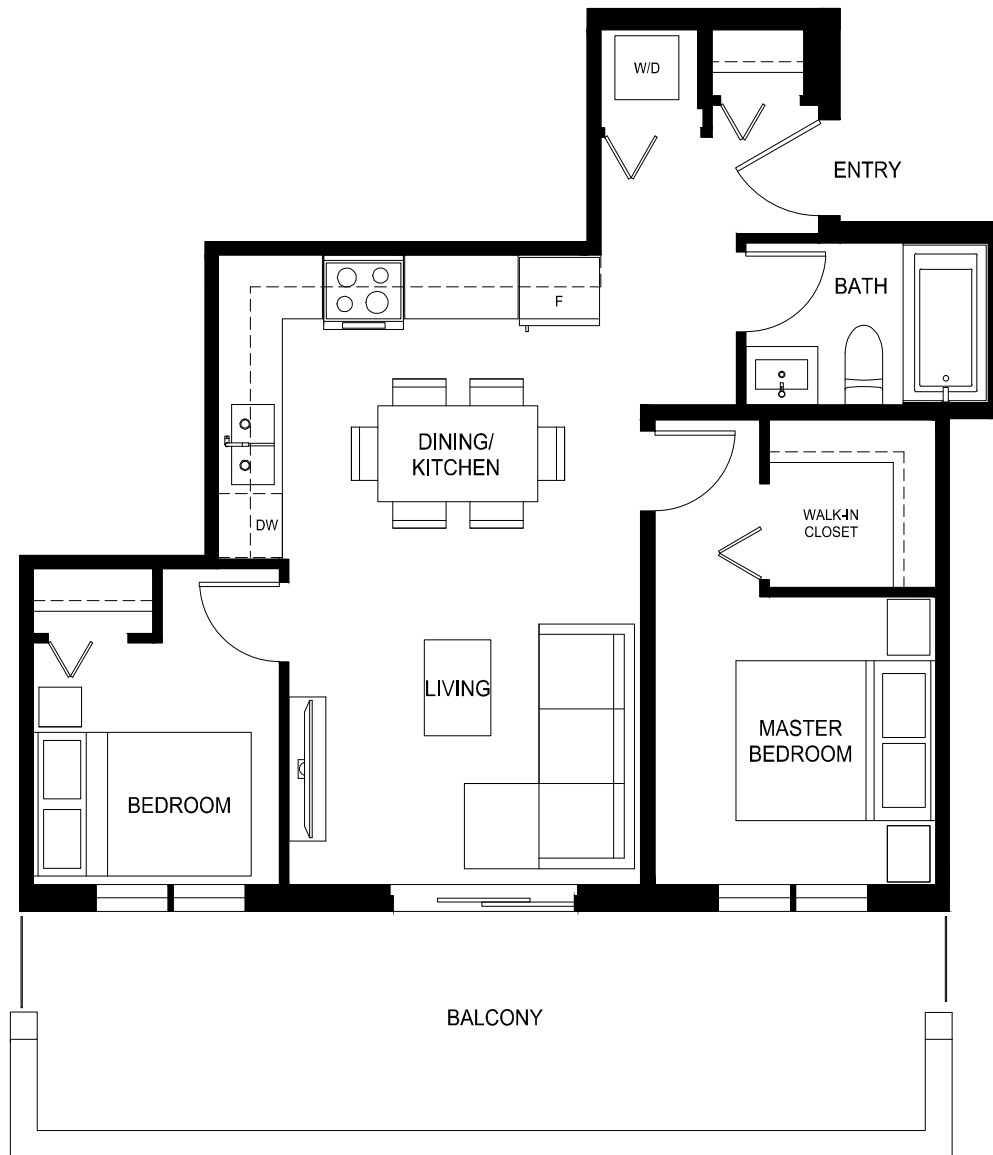
2 Bed, 1 Bath

Interior: 609 Sq Ft / Exterior: 182 Sq Ft

Total: 791 Sq Ft

QUINN

CENTRAL SURREY



Level 6



porte.ca/Quinn

In order to maintain a high standard for our homes, the developer reserves the right to modify specifications, plans or materials without notice. Images and/or renderings (and possible upgrades) may not be an exact representation of the finished buildings. Interior and exterior sizes are approximate and are subject to change. Renderings are artist's concept only. This is not an offering for sale, any such offering can only be made with a Disclosure Statement. E.&O.E.

porte⁷
homes

Plan C2

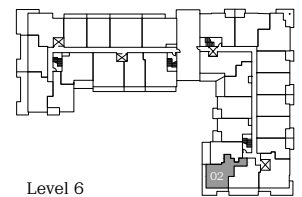
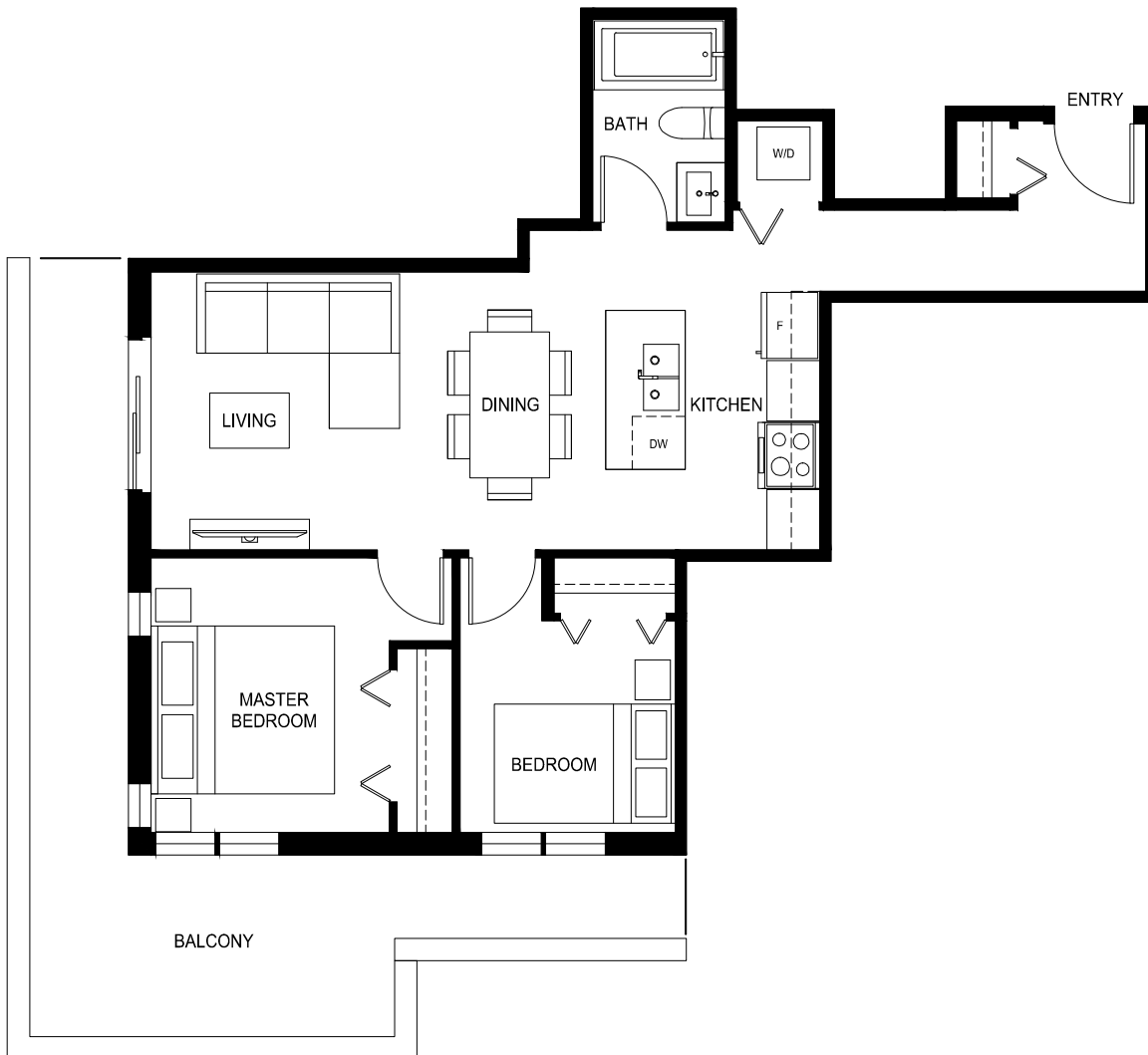
2 Bed, 1 Bath

Interior: 673 Sq Ft / Exterior: 187 Sq Ft

Total: 860 Sq Ft

QUINN

CENTRAL SURREY



Level 6



porte.ca/Quinn

In order to maintain a high standard for our homes, the developer reserves the right to modify specifications, plans or materials without notice. Images and/or renderings (and possible upgrades) may not be an exact representation of the finished buildings. Interior and exterior sizes are approximate and are subject to change. Renderings are artist's concept only. This is not an offering for sale, any such offering can only be made with a Disclosure Statement. E.&O.E.

porte⁷
homes

Plan C3

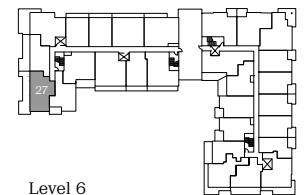
2 Bed, 1 Bath

Interior: 725 Sq Ft / Exterior: 352 Sq Ft

Total: 1077 Sq Ft

QUINN

CENTRAL SURREY



porte.ca/Quinn

In order to maintain a high standard for our homes, the developer reserves the right to modify specifications, plans or materials without notice. Images and/or renderings (and possible upgrades) may not be an exact representation of the finished buildings. Interior and exterior sizes are approximate and are subject to change. Renderings are artist's concept only. This is not an offering for sale, any such offering can only be made with a Disclosure Statement. E.&O.E.

porte⁷
homes

Plan C4

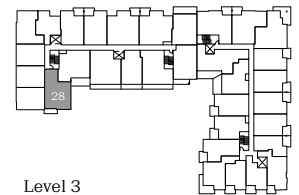
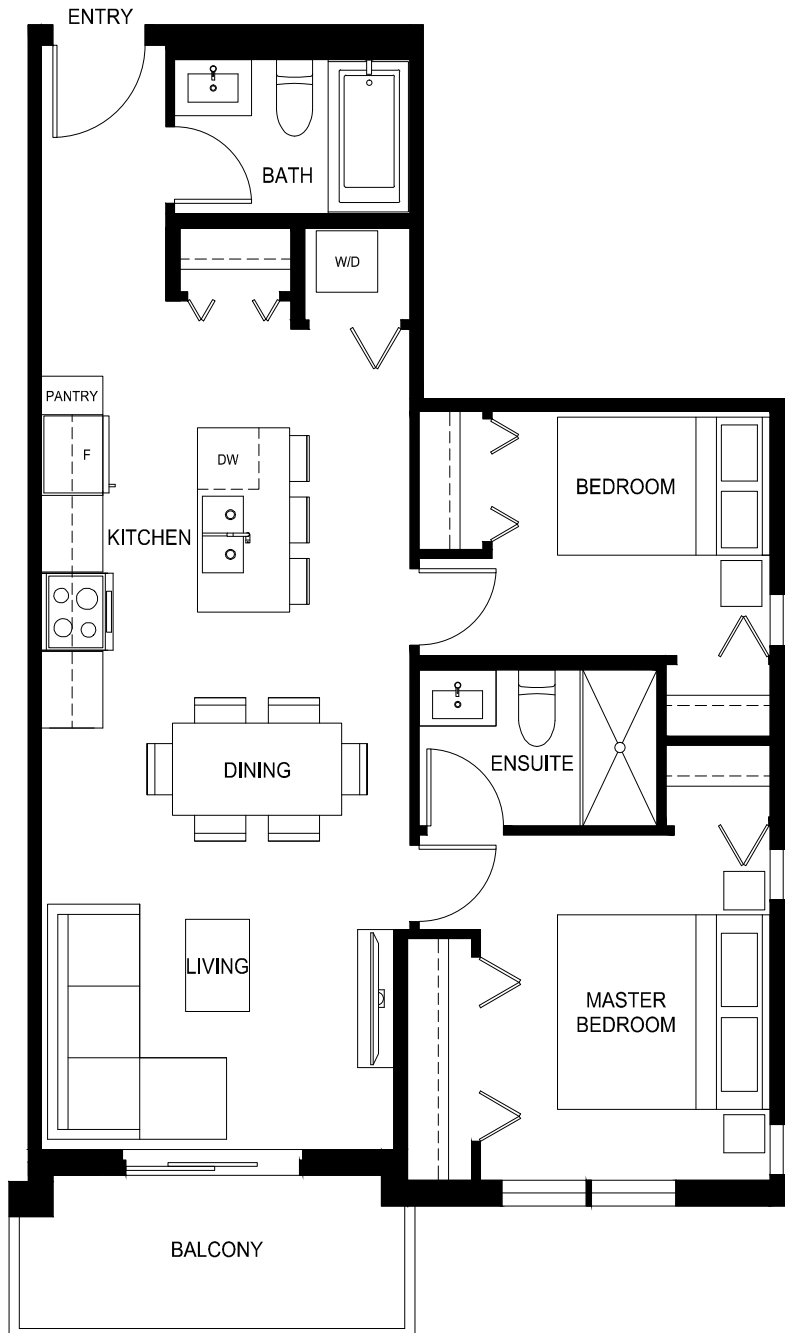
2 Bed, 2 Bath

Interior: 784 Sq Ft / Exterior: 60 Sq Ft

Total: 844 Sq Ft

QUINN

CENTRAL SURREY



Level 3



porte.ca/Quinn

In order to maintain a high standard for our homes, the developer reserves the right to modify specifications, plans or materials without notice. Images and/or renderings (and possible upgrades) may not be an exact representation of the finished buildings. Interior and exterior sizes are approximate and are subject to change. Renderings are artist's concept only. This is not an offering for sale, any such offering can only be made with a Disclosure Statement. E.&O.E.

porte⁷
homes

Plan C5

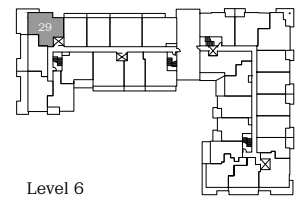
2 Bed, 2 Bath

Interior: 812 Sq Ft / Exterior: 300 Sq Ft

Total: 1112 Sq Ft

QUINN

CENTRAL SURREY



porte.ca/Quinn

In order to maintain a high standard for our homes, the developer reserves the right to modify specifications, plans or materials without notice. Images and/or renderings (and possible upgrades) may not be an exact representation of the finished buildings. Interior and exterior sizes are approximate and are subject to change. Renderings are artist's concept only. This is not an offering for sale, any such offering can only be made with a Disclosure Statement. E.&O.E.

porte⁷
homes

Plan D1

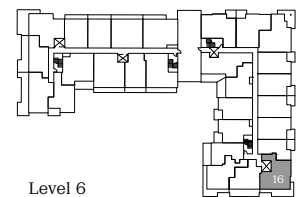
2 Bed + Den, 1 Bath

Interior: 759 Sq Ft / Exterior: 189 Sq Ft

Total: 948 Sq Ft

QUINN

CENTRAL SURREY



porte.ca/Quinn

In order to maintain a high standard for our homes, the developer reserves the right to modify specifications, plans or materials without notice. Images and/or renderings (and possible upgrades) may not be an exact representation of the finished buildings. Interior and exterior sizes are approximate and are subject to change. Renderings are artist's concept only. This is not an offering for sale, any such offering can only be made with a Disclosure Statement. E.&O.E.

porte⁷
homes

Plan D2

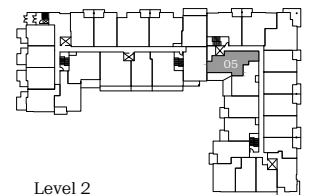
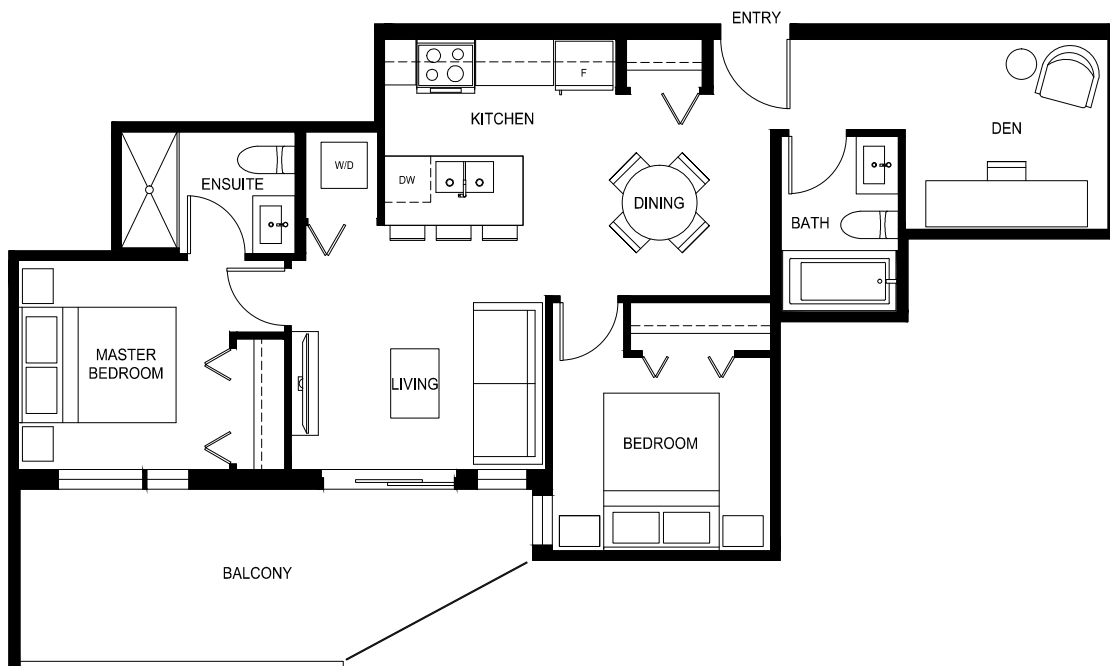
2 Bed + Den, 2 Bath

Interior: 750 Sq Ft / Exterior: 147 Sq Ft

Total: 897 Sq Ft

QUINN

CENTRAL SURREY



Level 2



porte.ca/Quinn

In order to maintain a high standard for our homes, the developer reserves the right to modify specifications, plans or materials without notice. Images and/or renderings (and possible upgrades) may not be an exact representation of the finished buildings. Interior and exterior sizes are approximate and are subject to change. Renderings are artist's concept only. This is not an offering for sale, any such offering can only be made with a Disclosure Statement. E.&O.E.

porte⁷
homes

Plan D3

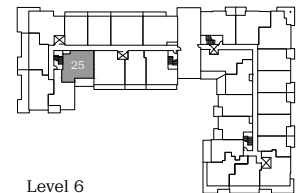
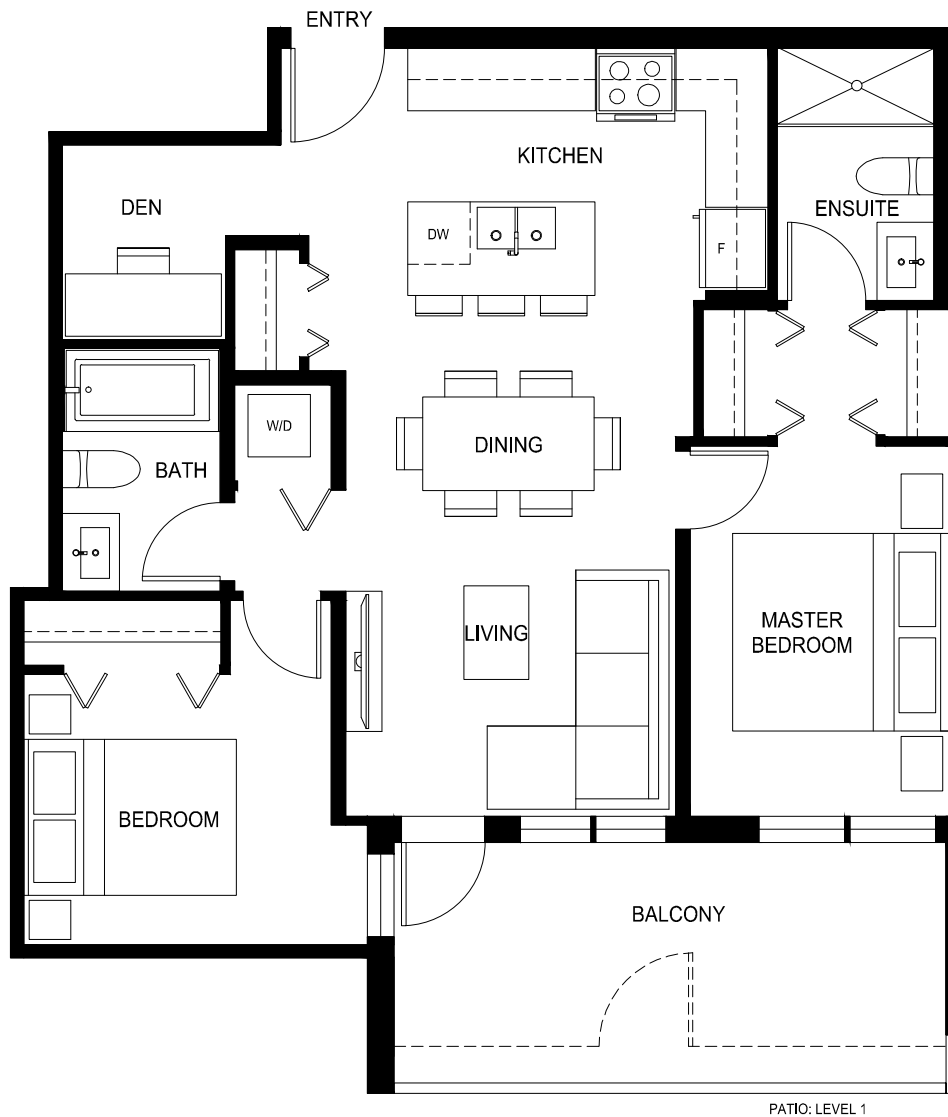
2 Bed + Den, 2 Bath

Interior: 772 Sq Ft / Exterior: 136 Sq Ft

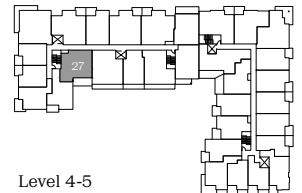
Total: 908 Sq Ft

QUINN

CENTRAL SURREY



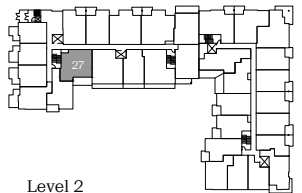
Level 6



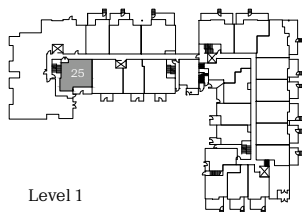
Level 4-5



Level 3



Level 2



Level 1



porte.ca/Quinn

In order to maintain a high standard for our homes, the developer reserves the right to modify specifications, plans or materials without notice. Images and/or renderings (and possible upgrades) may not be an exact representation of the finished buildings. Interior and exterior sizes are approximate and are subject to change. Renderings are artist's concept only. This is not an offering for sale, any such offering can only be made with a Disclosure Statement. E.&O.E.

porte⁷
homes

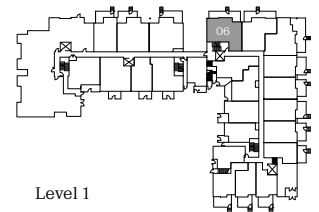
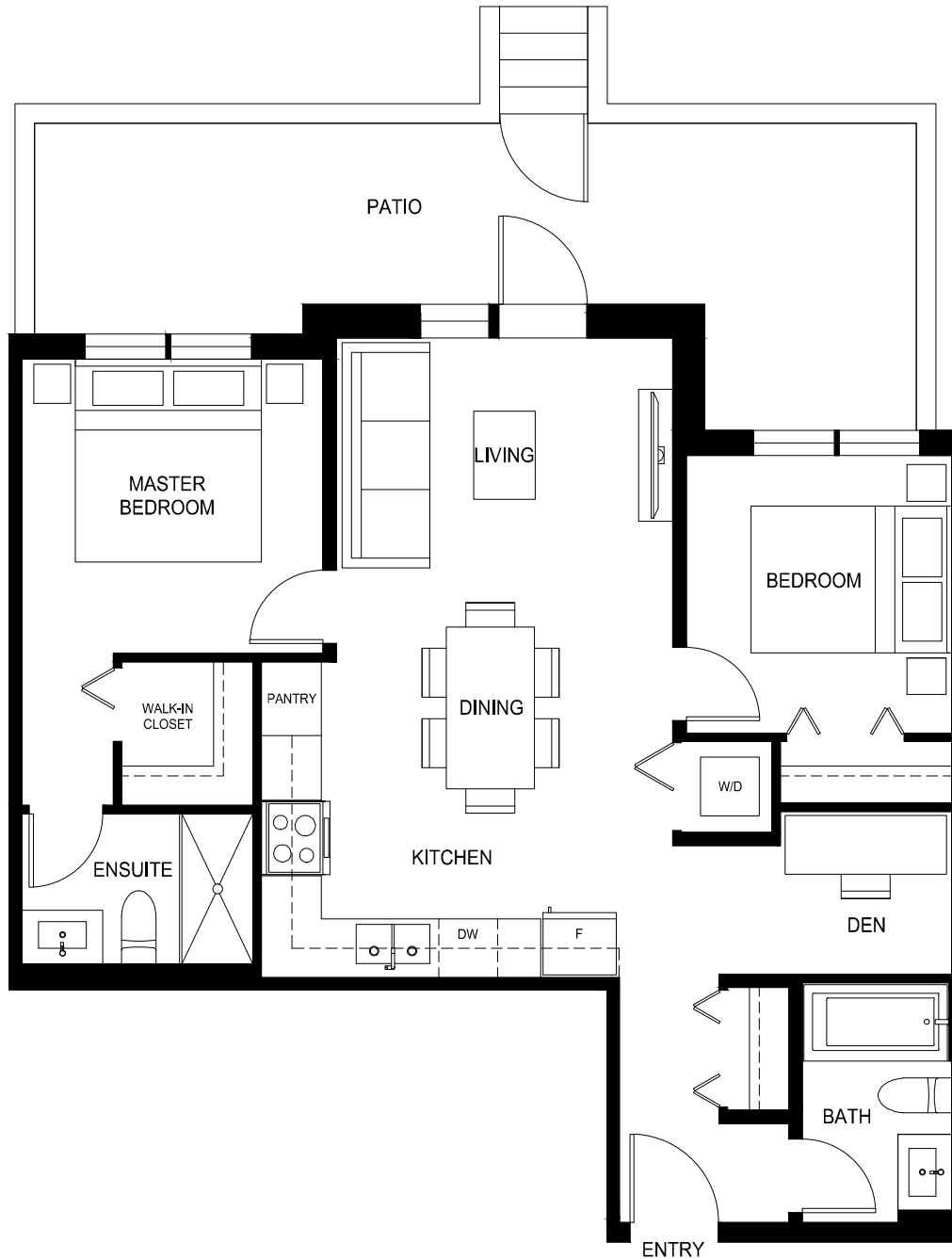
Plan D4 (Level 1)

2 Bed + Den, 2 Bath

Interior: 803 Sq Ft / Exterior: 61-217 Sq Ft

Total: 864-1020 Sq Ft

QUINN
CENTRAL SURREY



Level 1



porte.ca/Quinn

In order to maintain a high standard for our homes, the developer reserves the right to modify specifications, plans or materials without notice. Images and/or renderings (and possible upgrades) may not be an exact representation of the finished buildings. Interior and exterior sizes are approximate and are subject to change. Renderings are artist's concept only. This is not an offering for sale, any such offering can only be made with a Disclosure Statement. E.&O.E.

porte⁷
homes

Plan D4

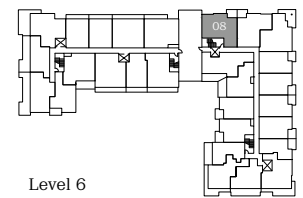
2 Bed + Den, 2 Bath

Interior: 803 Sq Ft / Exterior: 61-217 Sq Ft

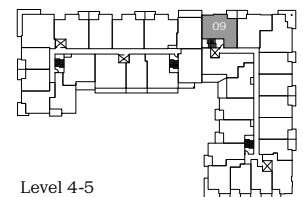
Total: 864-1020 Sq Ft

QUINN

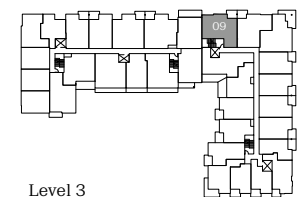
CENTRAL SURREY



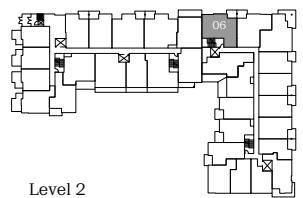
Level 6



Level 4-5



Level 3



Level 2



porte.ca/Quinn

In order to maintain a high standard for our homes, the developer reserves the right to modify specifications, plans or materials without notice. Images and/or renderings (and possible upgrades) may not be an exact representation of the finished buildings. Interior and exterior sizes are approximate and are subject to change. Renderings are artist's concept only. This is not an offering for sale, any such offering can only be made with a Disclosure Statement. E.&O.E.

porte⁷
homes

Plan D5

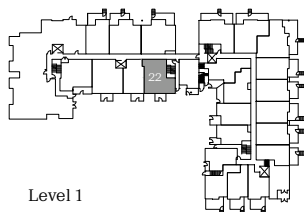
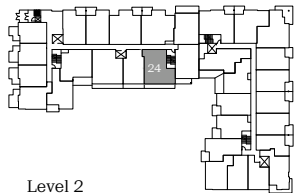
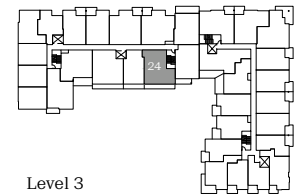
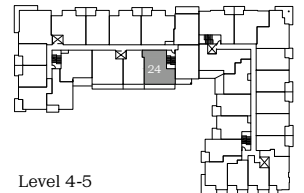
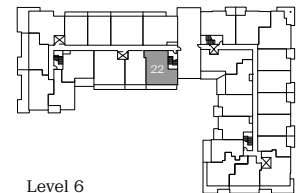
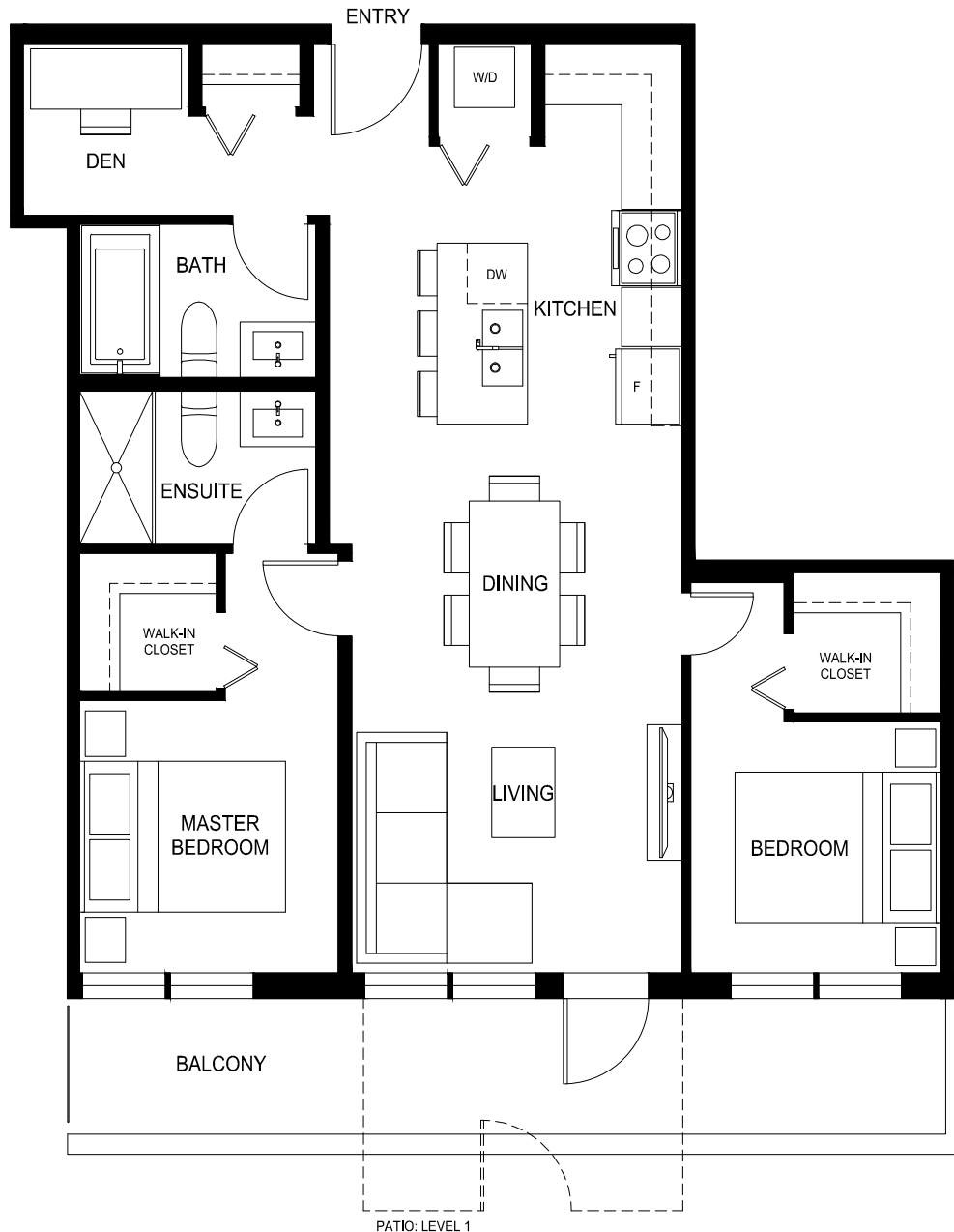
2 Bed + Den, 2 Bath

Interior: 785 Sq Ft / Exterior: 120-144 Sq Ft

Total: 905-929 Sq Ft

QUINN

CENTRAL SURREY



porte.ca/Quinn

In order to maintain a high standard for our homes, the developer reserves the right to modify specifications, plans or materials without notice. Images and/or renderings (and possible upgrades) may not be an exact representation of the finished buildings. Interior and exterior sizes are approximate and are subject to change. Renderings are artist's concept only. This is not an offering for sale, any such offering can only be made with a Disclosure Statement. E.&O.E.

porte⁷
homes

Plan D6 (Level 1)

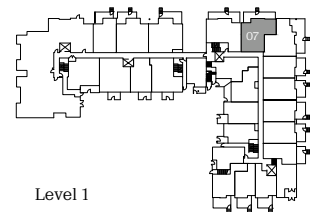
2 Bed + Den, 2 Bath

Interior: 800 Sq Ft / Exterior: 61-215 Sq Ft

Total: 861-1015 Sq Ft

QUINN

CENTRAL SURREY



Level 1



porte.ca/Quinn

In order to maintain a high standard for our homes, the developer reserves the right to modify specifications, plans or materials without notice. Images and/or renderings (and possible upgrades) may not be an exact representation of the finished buildings. Interior and exterior sizes are approximate and are subject to change. Renderings are artist's concept only. This is not an offering for sale, any such offering can only be made with a Disclosure Statement. E.&O.E.

porte⁷
homes

Plan D6

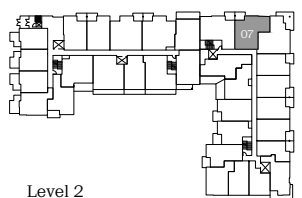
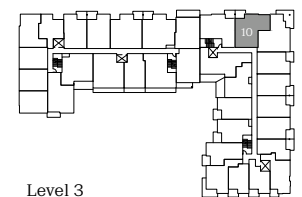
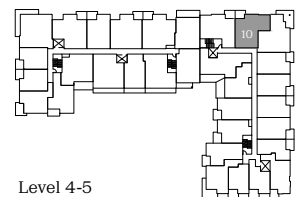
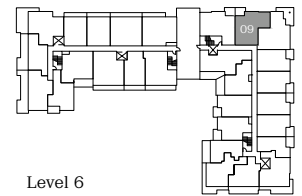
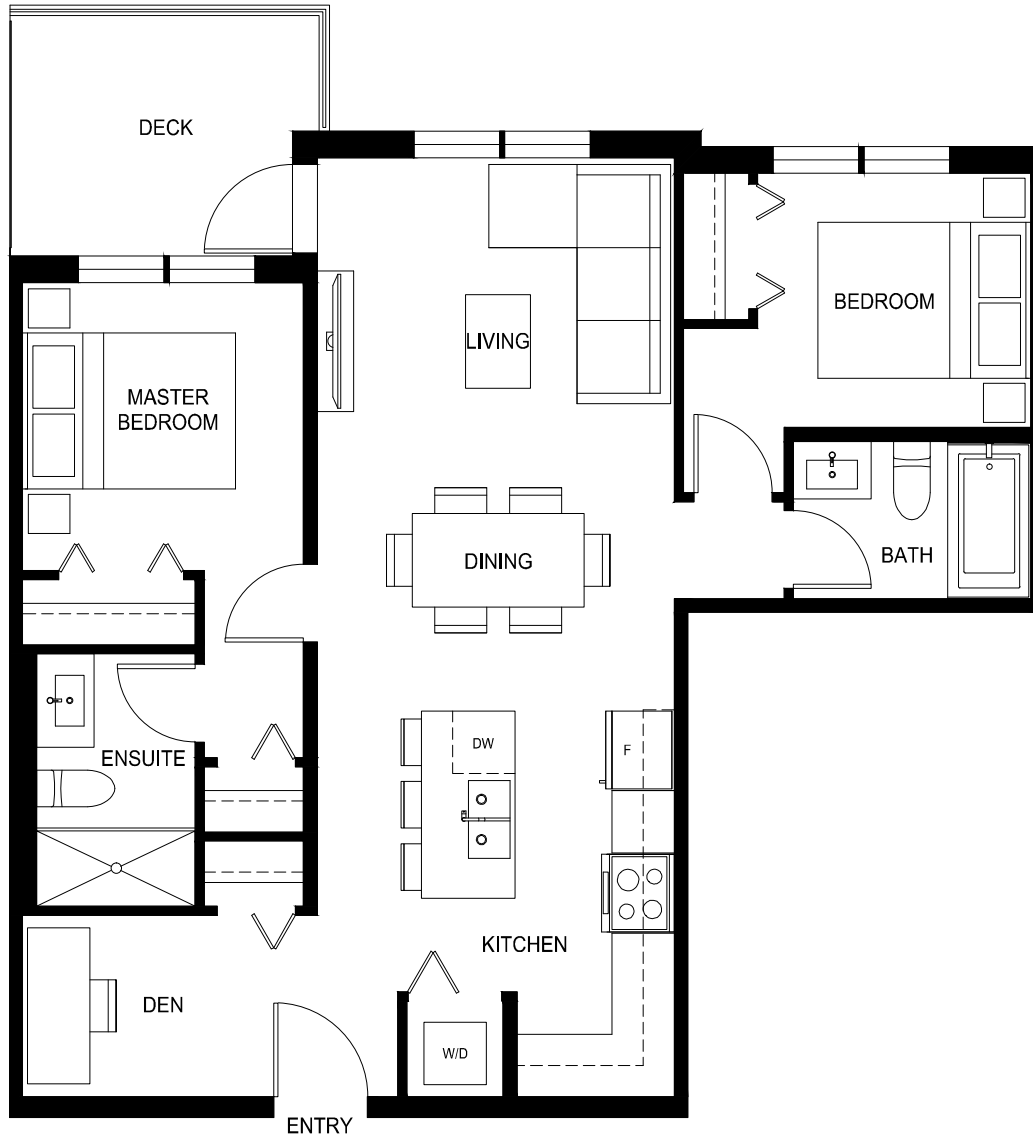
2 Bed + Den, 2 Bath

Interior: 800 Sq Ft / Exterior: 61-215 Sq Ft

Total: 861-1015 Sq Ft

QUINN

CENTRAL SURREY



porte.ca/Quinn

In order to maintain a high standard for our homes, the developer reserves the right to modify specifications, plans or materials without notice. Images and/or renderings (and possible upgrades) may not be an exact representation of the finished buildings. Interior and exterior sizes are approximate and are subject to change. Renderings are artist's concept only. This is not an offering for sale, any such offering can only be made with a Disclosure Statement. E.&O.E.

porte⁷
homes

Plan D7

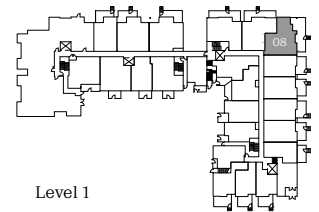
2 Bed + Den, 2 Bath

Interior: 813 Sq Ft / Exterior: 339 Sq Ft

Total: 1152 Sq Ft

QUINN

CENTRAL SURREY



Level 1



porte.ca/Quinn

In order to maintain a high standard for our homes, the developer reserves the right to modify specifications, plans or materials without notice. Images and/or renderings (and possible upgrades) may not be an exact representation of the finished buildings. Interior and exterior sizes are approximate and are subject to change. Renderings are artist's concept only. This is not an offering for sale, any such offering can only be made with a Disclosure Statement. E.&O.E.

porte⁷
homes

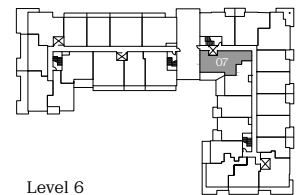
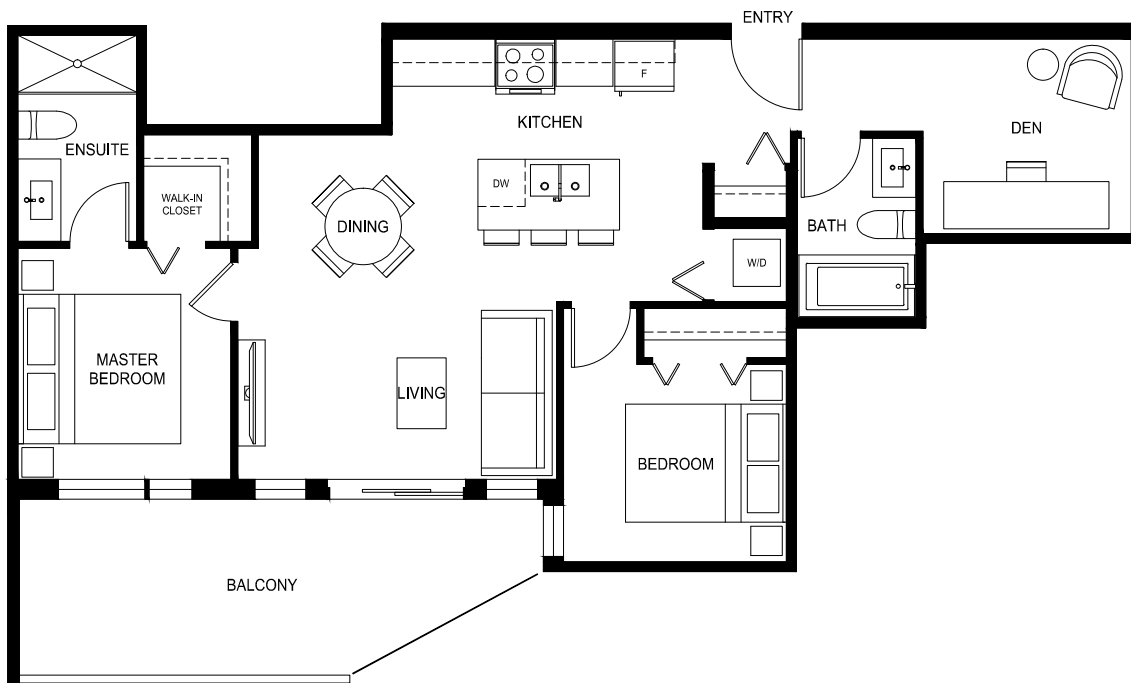
Plan D8

2 Bed + Den, 2 Bath

Interior: 818 Sq Ft / Exterior: 147 Sq Ft

Total: 965 Sq Ft

QUINN
CENTRAL SURREY



Level 6



porte.ca/Quinn

In order to maintain a high standard for our homes, the developer reserves the right to modify specifications, plans or materials without notice. Images and/or renderings (and possible upgrades) may not be an exact representation of the finished buildings. Interior and exterior sizes are approximate and are subject to change. Renderings are artist's concept only. This is not an offering for sale, any such offering can only be made with a Disclosure Statement. E.&O.E.

porte⁷
homes

Plan D9

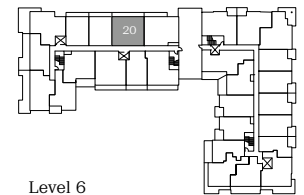
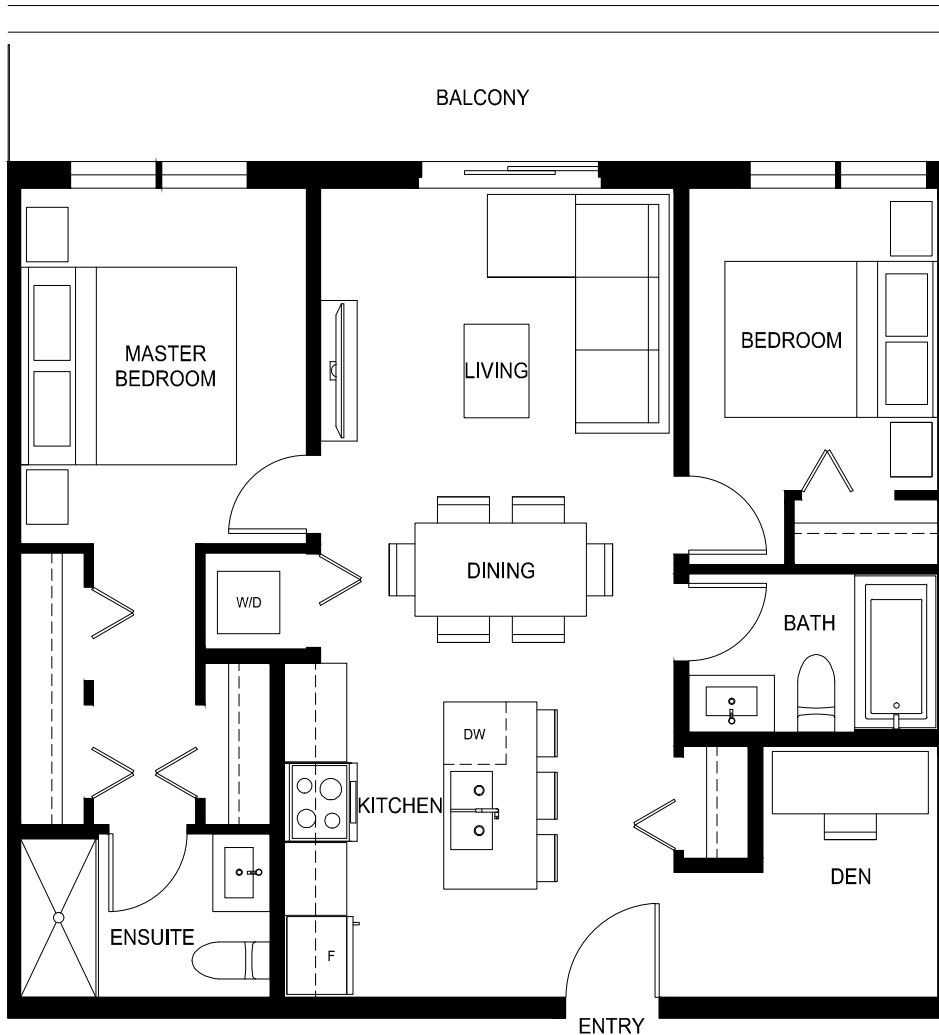
2 Bed + Den, 2 Bath

Interior: 807 Sq Ft / Exterior: 115 Sq Ft

Total: 922 Sq Ft

QUINN

CENTRAL SURREY



Level 6



porte.ca/Quinn

In order to maintain a high standard for our homes, the developer reserves the right to modify specifications, plans or materials without notice. Images and/or renderings (and possible upgrades) may not be an exact representation of the finished buildings. Interior and exterior sizes are approximate and are subject to change. Renderings are artist's concept only. This is not an offering for sale, any such offering can only be made with a Disclosure Statement. E.&O.E.

porte⁷
homes

Plan D10

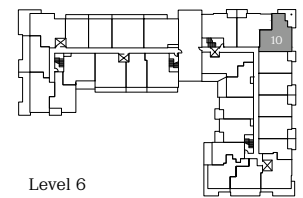
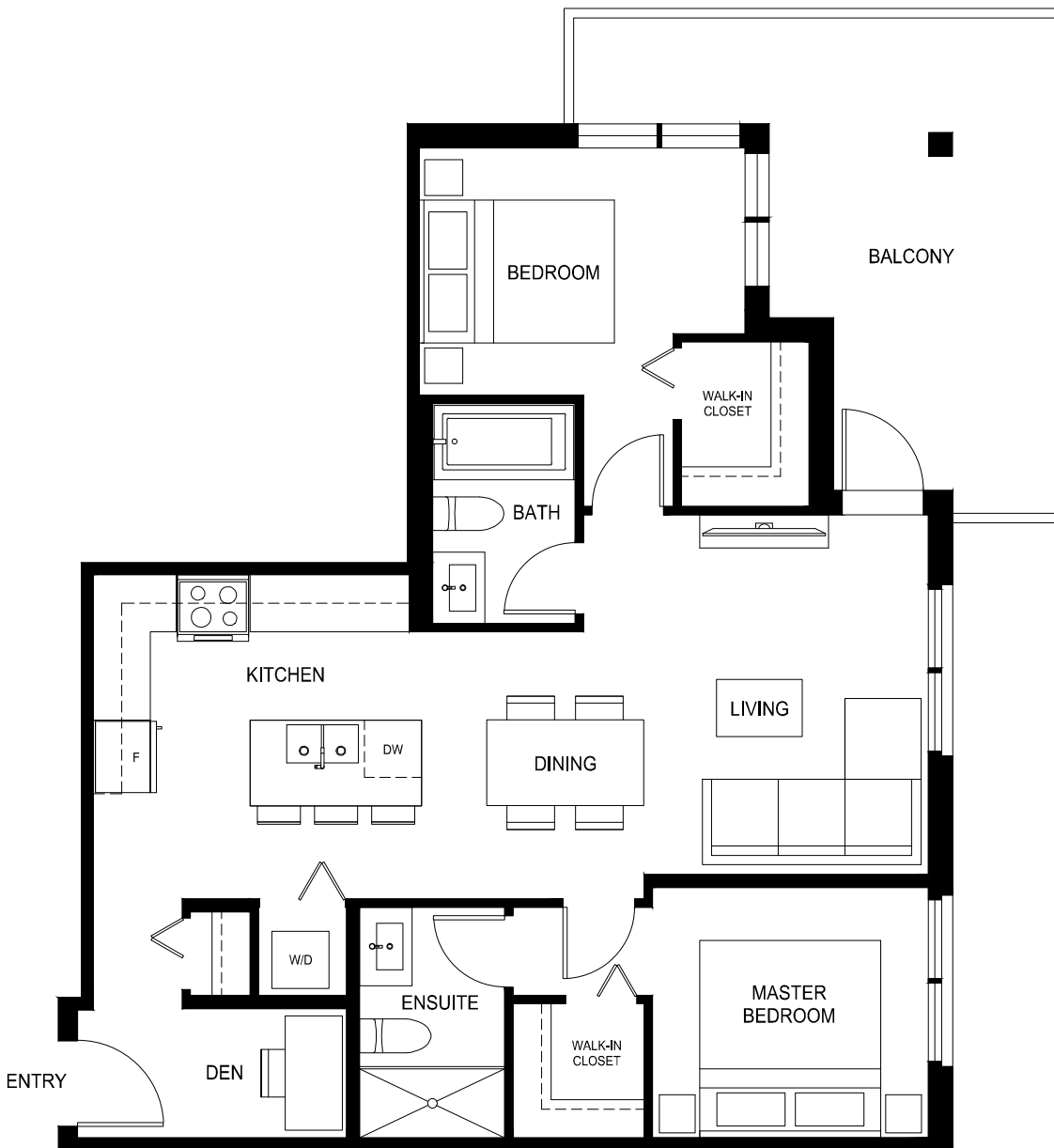
2 Bed + Den, 2 Bath

Interior: 832 Sq Ft / Exterior: 147 Sq Ft

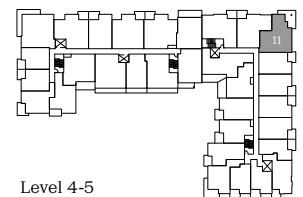
Total: 979 Sq Ft

QUINN

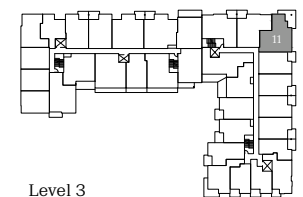
CENTRAL SURREY



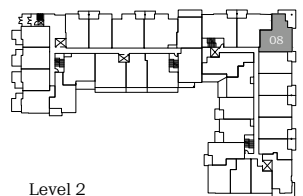
Level 6



Level 4-5



Level 3



Level 2



porte.ca/Quinn

In order to maintain a high standard for our homes, the developer reserves the right to modify specifications, plans or materials without notice. Images and/or renderings (and possible upgrades) may not be an exact representation of the finished buildings. Interior and exterior sizes are approximate and are subject to change. Renderings are artist's concept only. This is not an offering for sale, any such offering can only be made with a Disclosure Statement. E.&O.E.

porte⁷
homes

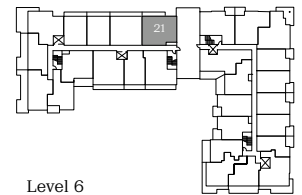
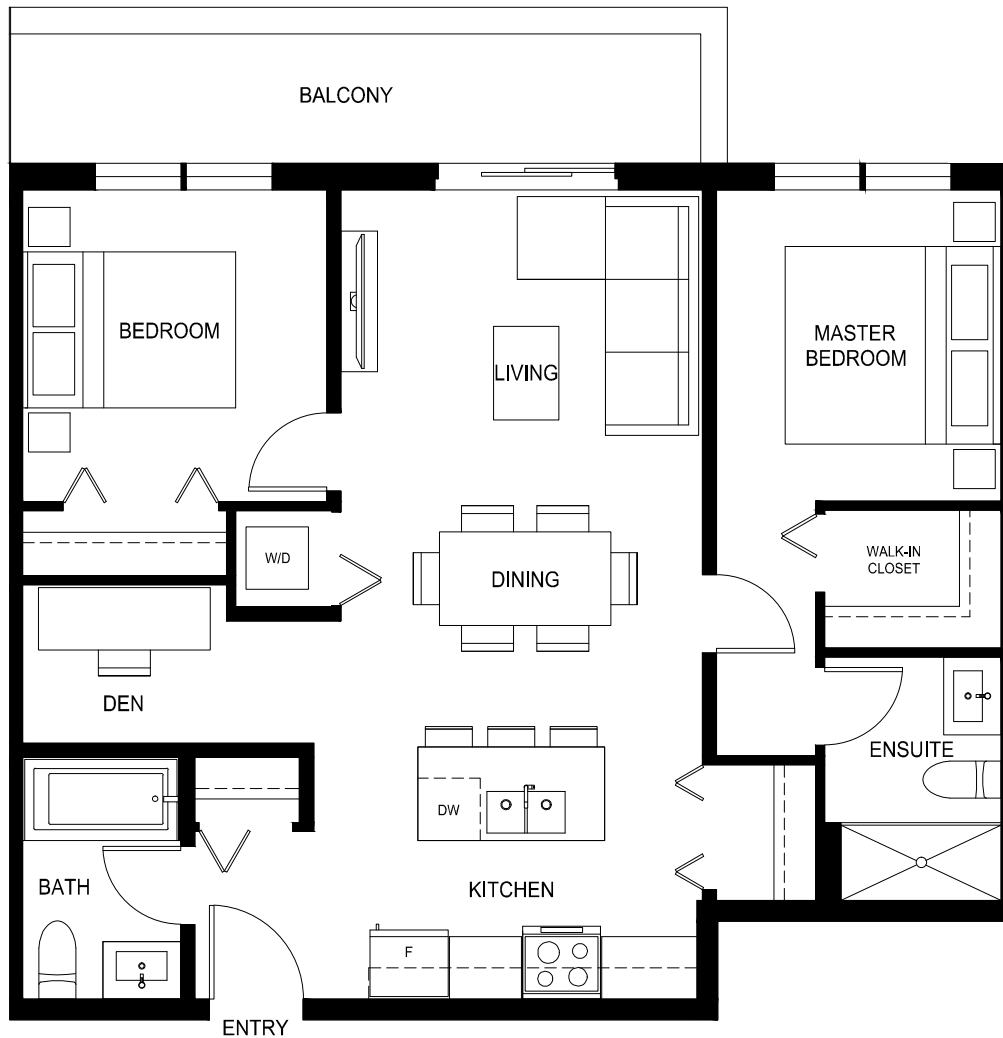
Plan D11

2 Bed + Den, 2 Bath

Interior: 833 Sq Ft / Exterior: 83 Sq Ft

Total: 916 Sq Ft

QUINN
CENTRAL SURREY



Level 6



porte.ca/Quinn

In order to maintain a high standard for our homes, the developer reserves the right to modify specifications, plans or materials without notice. Images and/or renderings (and possible upgrades) may not be an exact representation of the finished buildings. Interior and exterior sizes are approximate and are subject to change. Renderings are artist's concept only. This is not an offering for sale, any such offering can only be made with a Disclosure Statement. E.&O.E.

porte⁷
homes

Plan D12

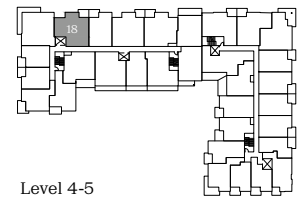
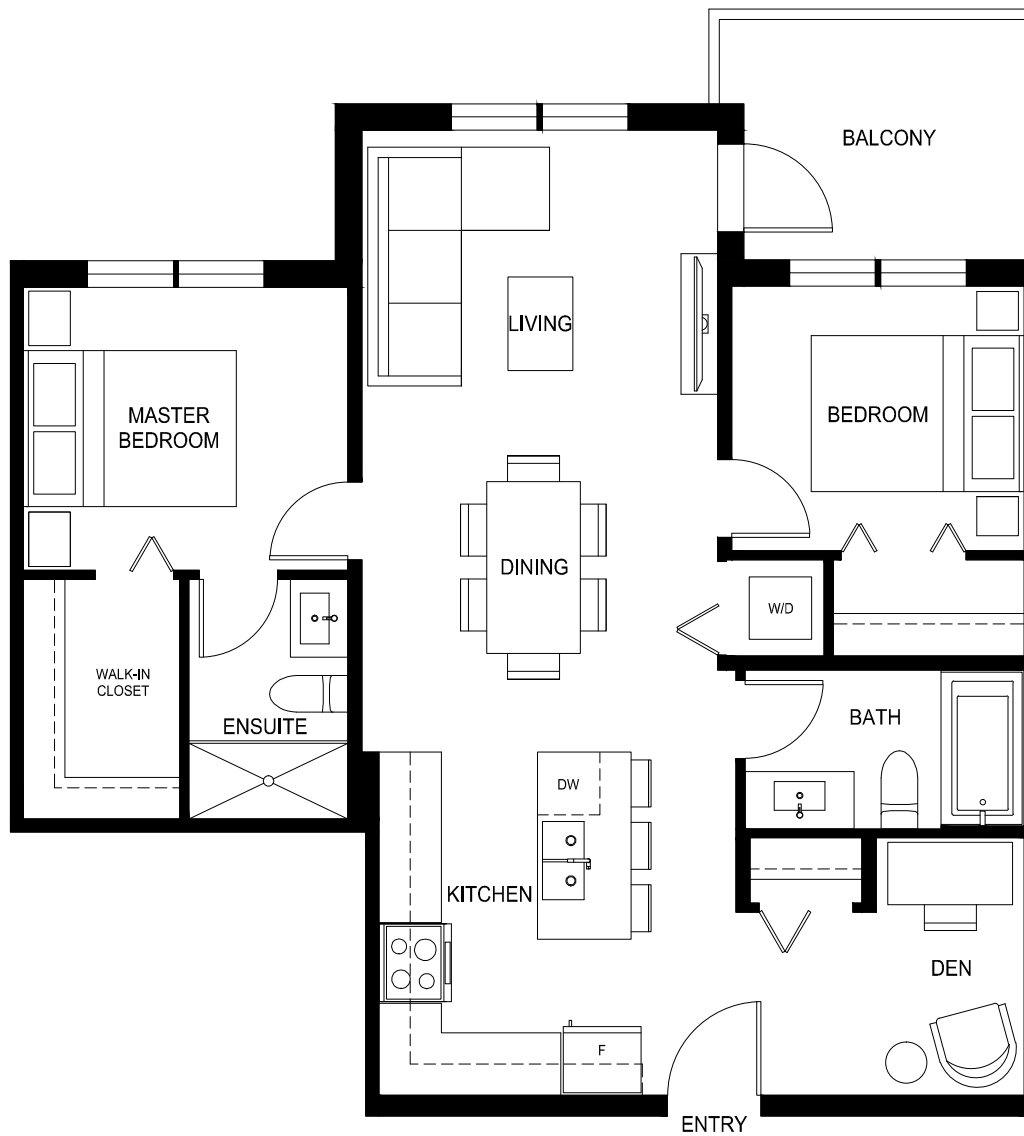
2 Bed + Den, 2 Bath

Interior: 848 Sq Ft / Exterior: 80 Sq Ft

Total: 928 Sq Ft

QUINN

CENTRAL SURREY



Level 4-5



porte.ca/Quinn

In order to maintain a high standard for our homes, the developer reserves the right to modify specifications, plans or materials without notice. Images and/or renderings (and possible upgrades) may not be an exact representation of the finished buildings. Interior and exterior sizes are approximate and are subject to change. Renderings are artist's concept only. This is not an offering for sale, any such offering can only be made with a Disclosure Statement. E.&O.E.

porte⁷
homes

Plan D13

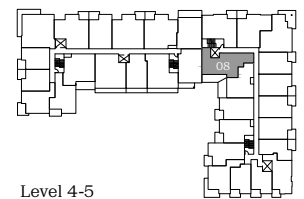
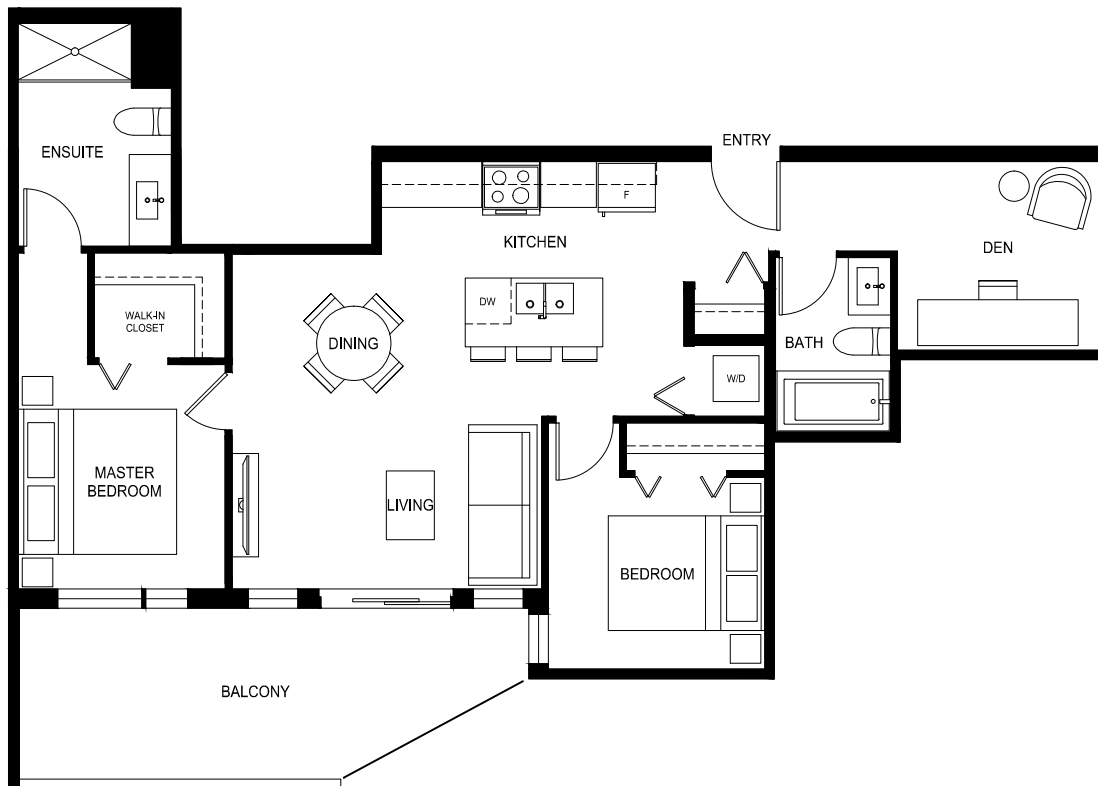
2 Bed + Den, 2 Bath

Interior: 858 Sq Ft / Exterior: 147 Sq Ft

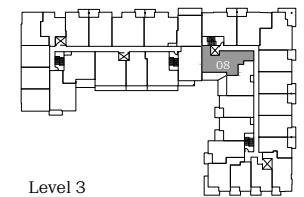
Total: 1005 Sq Ft

QUINN

CENTRAL SURREY



Level 4-5



Level 3



porte.ca/Quinn

In order to maintain a high standard for our homes, the developer reserves the right to modify specifications, plans or materials without notice. Images and/or renderings (and possible upgrades) may not be an exact representation of the finished buildings. Interior and exterior sizes are approximate and are subject to change. Renderings are artist's concept only. This is not an offering for sale, any such offering can only be made with a Disclosure Statement. E.&O.E.

porte⁷
homes

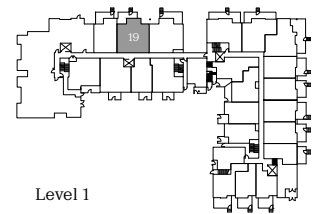
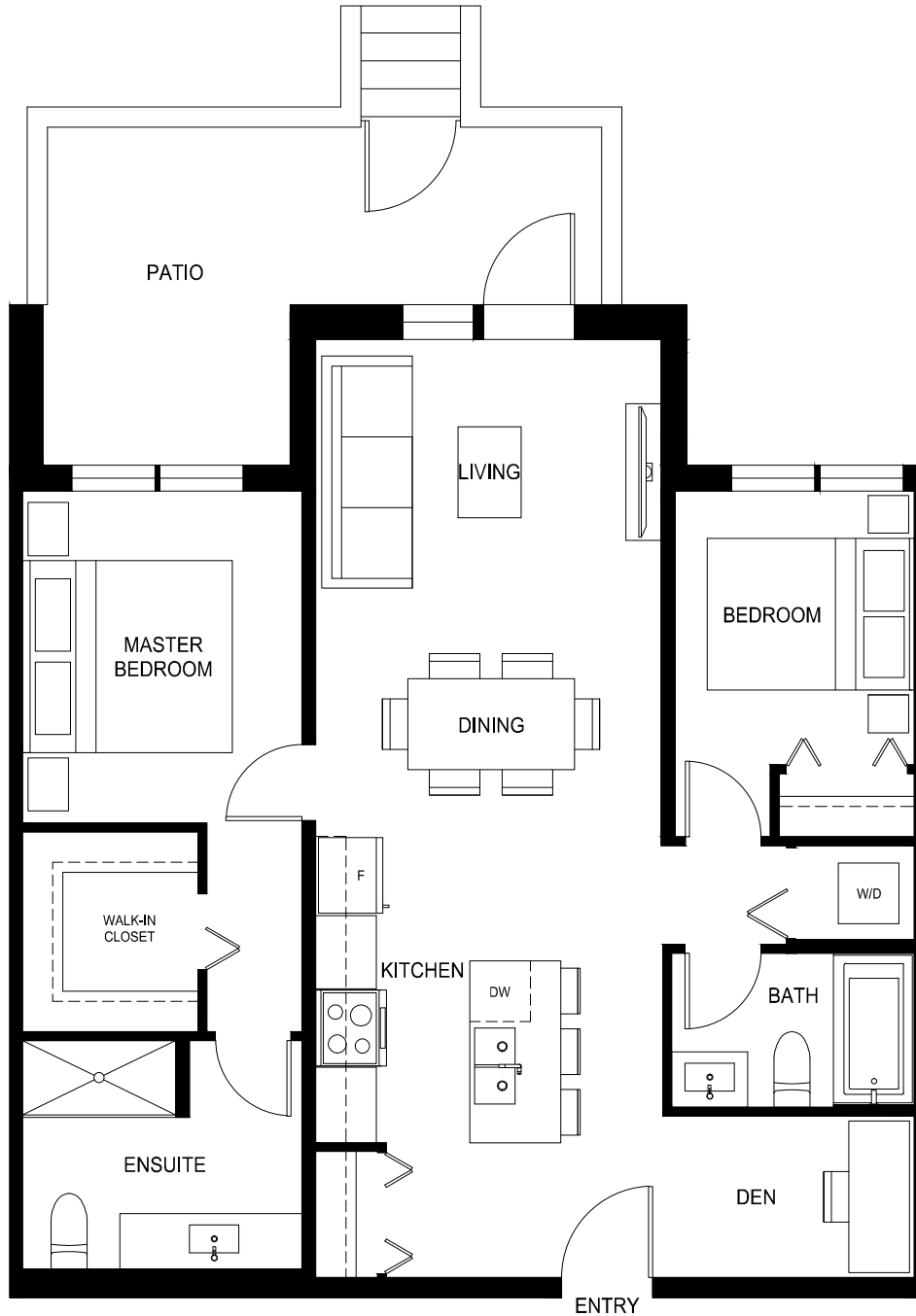
Plan D14 (Level 1)

2 Bed + Den, 2 Bath

Interior: 870 Sq Ft / Exterior: 61-149 Sq Ft

Total: 931-1019 Sq Ft

QUINN
CENTRAL SURREY



porte.ca/Quinn

In order to maintain a high standard for our homes, the developer reserves the right to modify specifications, plans or materials without notice. Images and/or renderings (and possible upgrades) may not be an exact representation of the finished buildings. Interior and exterior sizes are approximate and are subject to change. Renderings are artist's concept only. This is not an offering for sale, any such offering can only be made with a Disclosure Statement. E.&O.E.

porte⁷
homes

Plan D14

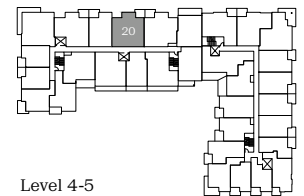
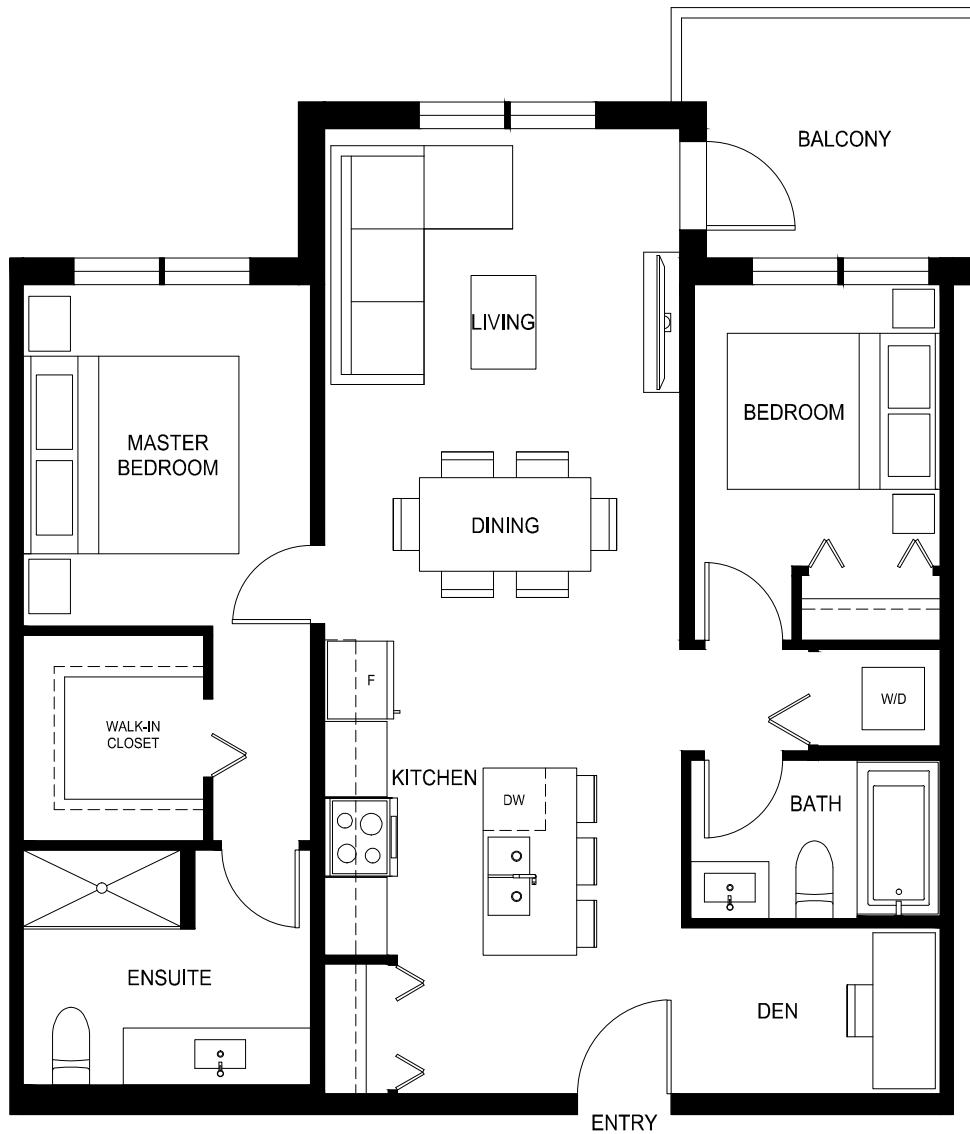
2 Bed + Den, 2 Bath

Interior: 870 Sq Ft / Exterior: 61-149 Sq Ft

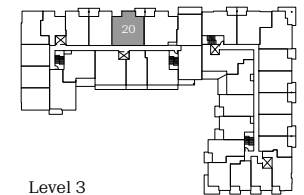
Total: 931-1019 Sq Ft

QUINN

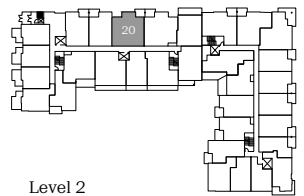
CENTRAL SURREY



Level 4-5



Level 3



Level 2



porte.ca/Quinn

In order to maintain a high standard for our homes, the developer reserves the right to modify specifications, plans or materials without notice. Images and/or renderings (and possible upgrades) may not be an exact representation of the finished buildings. Interior and exterior sizes are approximate and are subject to change. Renderings are artist's concept only. This is not an offering for sale, any such offering can only be made with a Disclosure Statement. E.&O.E.

porte⁷
homes

Plan D15

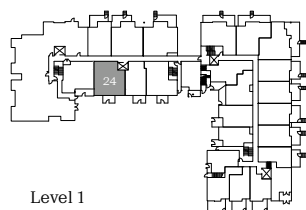
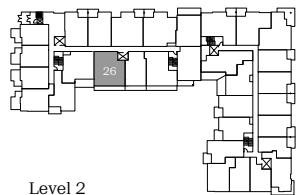
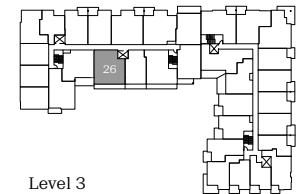
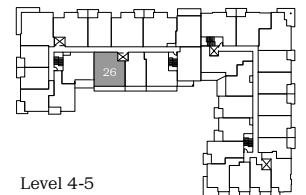
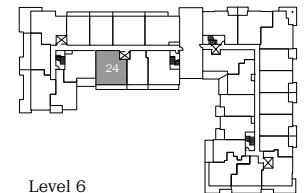
2 Bed + Den, 2 Bath

Interior: 871 Sq Ft / Exterior: 92-144 Sq Ft

Total: 963-1015 Sq Ft

QUINN

CENTRAL SURREY



porte.ca/Quinn

In order to maintain a high standard for our homes, the developer reserves the right to modify specifications, plans or materials without notice. Images and/or renderings (and possible upgrades) may not be an exact representation of the finished buildings. Interior and exterior sizes are approximate and are subject to change. Renderings are artist's concept only. This is not an offering for sale, any such offering can only be made with a Disclosure Statement. E.&O.E.

porte⁷
homes

Plan D16

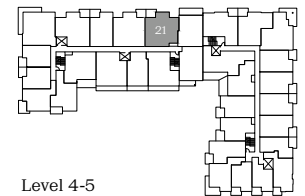
2 Bed + Den, 2 Bath

Interior: 879 Sq Ft / Exterior: 65 Sq Ft

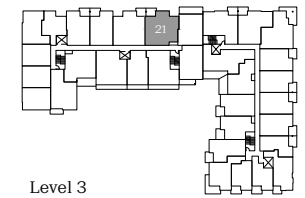
Total: 944 Sq Ft

QUINN

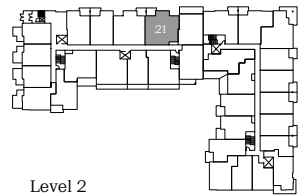
CENTRAL SURREY



Level 4-5



Level 3



Level 2



porte.ca/Quinn

In order to maintain a high standard for our homes, the developer reserves the right to modify specifications, plans or materials without notice. Images and/or renderings (and possible upgrades) may not be an exact representation of the finished buildings. Interior and exterior sizes are approximate and are subject to change. Renderings are artist's concept only. This is not an offering for sale, any such offering can only be made with a Disclosure Statement. E.&O.E.

porte⁷
homes

Plan D17

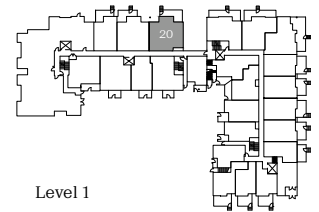
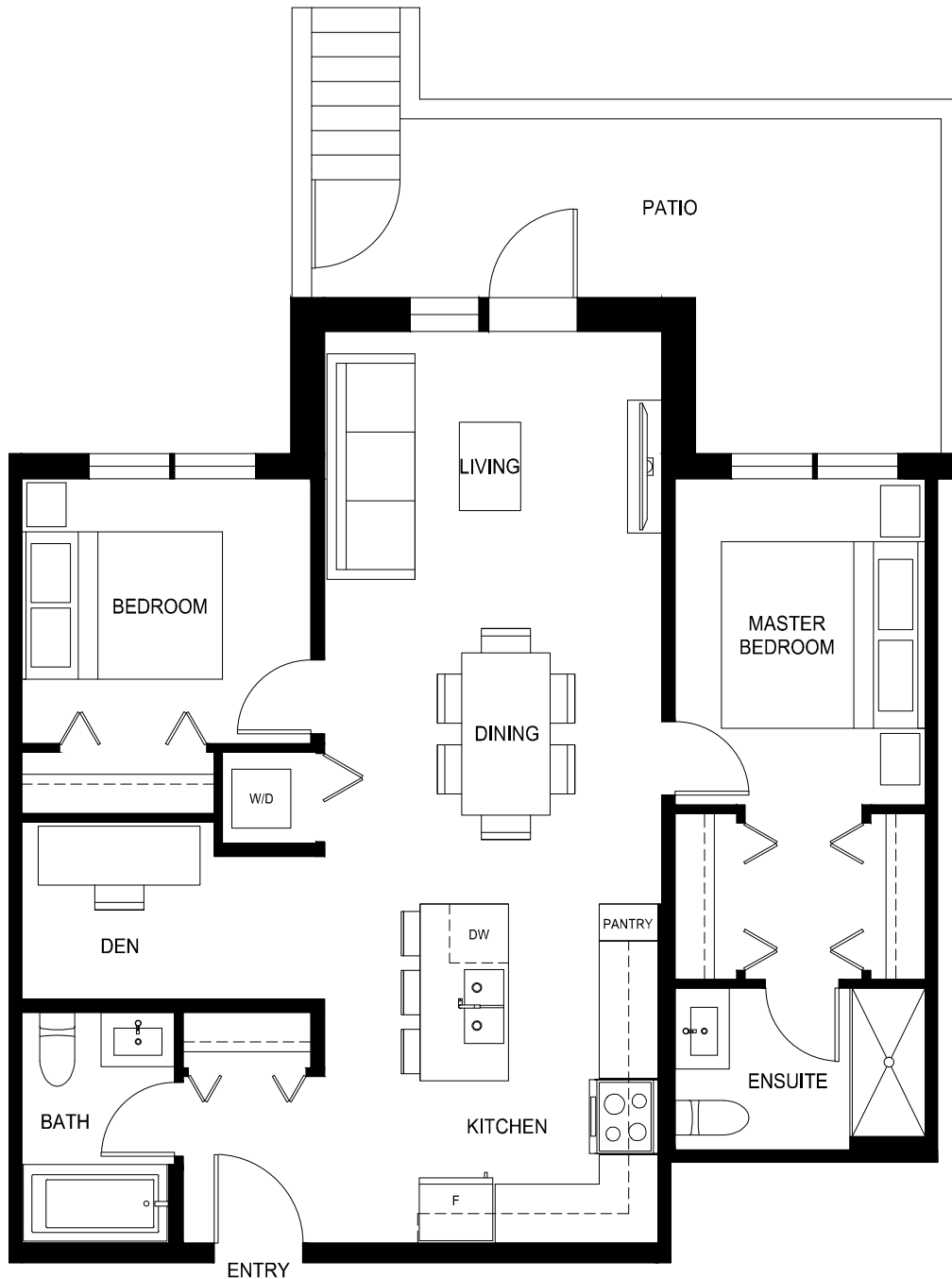
2 Bed + Den, 2 Bath

Interior: 896 Sq Ft / Exterior: 158 Sq Ft

Total: 1054 Sq Ft

QUINN

CENTRAL SURREY



porte.ca/Quinn

In order to maintain a high standard for our homes, the developer reserves the right to modify specifications, plans or materials without notice. Images and/or renderings (and possible upgrades) may not be an exact representation of the finished buildings. Interior and exterior sizes are approximate and are subject to change. Renderings are artist's concept only. This is not an offering for sale, any such offering can only be made with a Disclosure Statement. E.&O.E.

porte⁷
homes

Plan E1

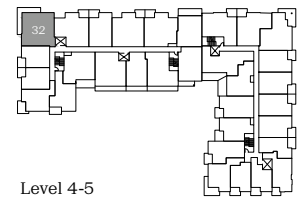
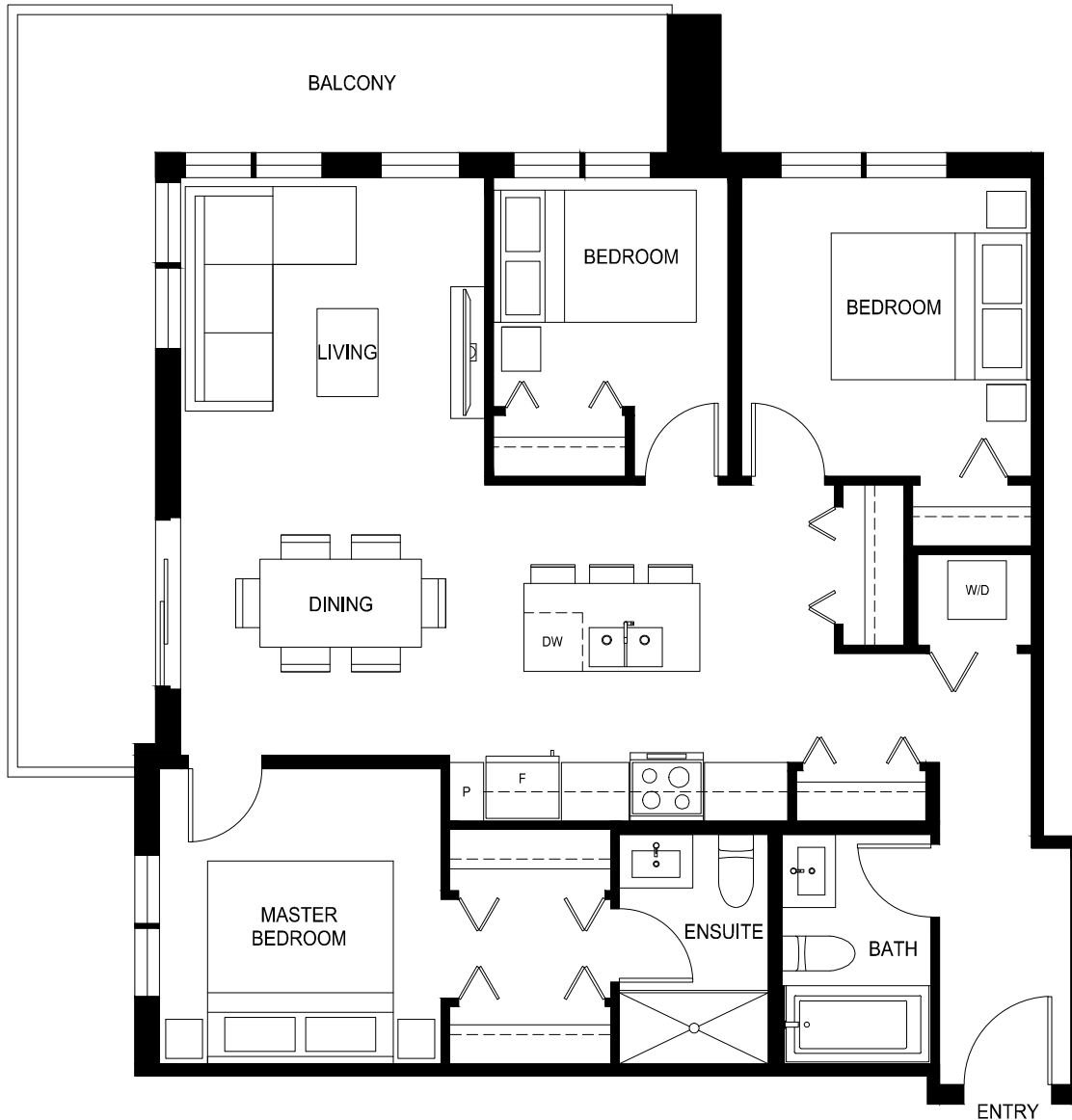
3 Bed, 2 Bath

Interior: 957 Sq Ft / Exterior: 146-202 Sq Ft

Total: 1103-1159 Sq Ft

QUINN

CENTRAL SURREY



Level 4-5



porte.ca/Quinn

In order to maintain a high standard for our homes, the developer reserves the right to modify specifications, plans or materials without notice. Images and/or renderings (and possible upgrades) may not be an exact representation of the finished buildings. Interior and exterior sizes are approximate and are subject to change. Renderings are artist's concept only. This is not an offering for sale, any such offering can only be made with a Disclosure Statement. E.&O.E.

porte⁷
homes

Townhome 1

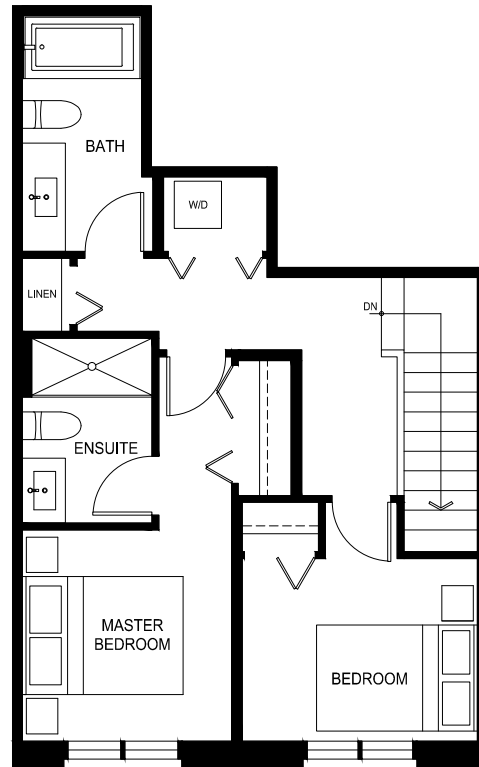
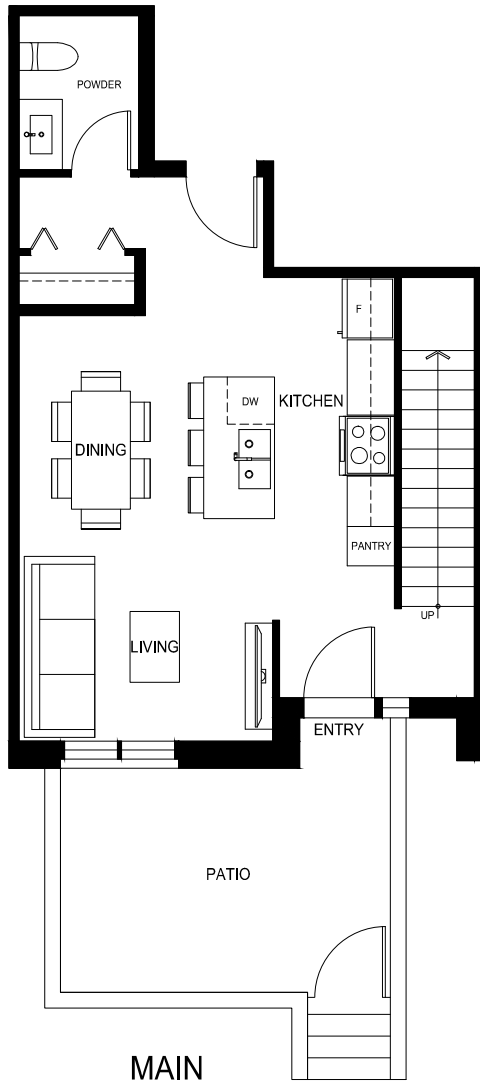
2 Bed, 2.5 Bath

Interior: 991 Sq Ft / Exterior: 141 Sq Ft

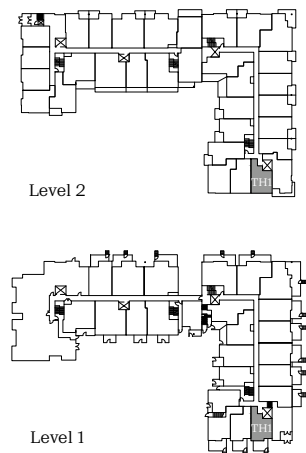
Total: 1132 Sq Ft

QUINN

CENTRAL SURREY



UPPER



porte.ca/Quinn

In order to maintain a high standard for our homes, the developer reserves the right to modify specifications, plans or materials without notice. Images and/or renderings (and possible upgrades) may not be an exact representation of the finished buildings. Interior and exterior sizes are approximate and are subject to change. Renderings are artist's concept only. This is not an offering for sale, any such offering can only be made with a Disclosure Statement. E.&O.E.

porte⁷
homes

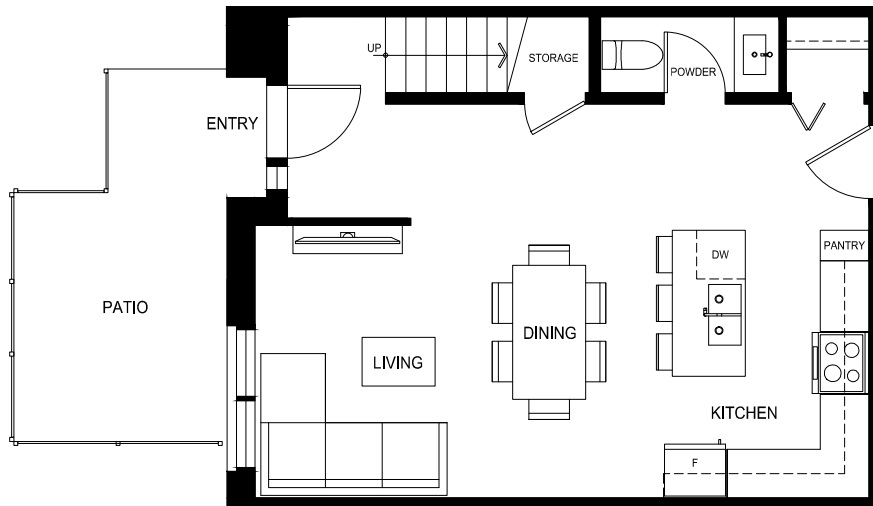
Townhome 2

2 Bed, 2.5 Bath + Den

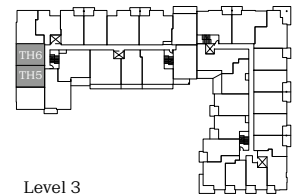
Interior: 1062 Sq Ft / Exterior: 129 Sq Ft

Total: 1191 Sq Ft

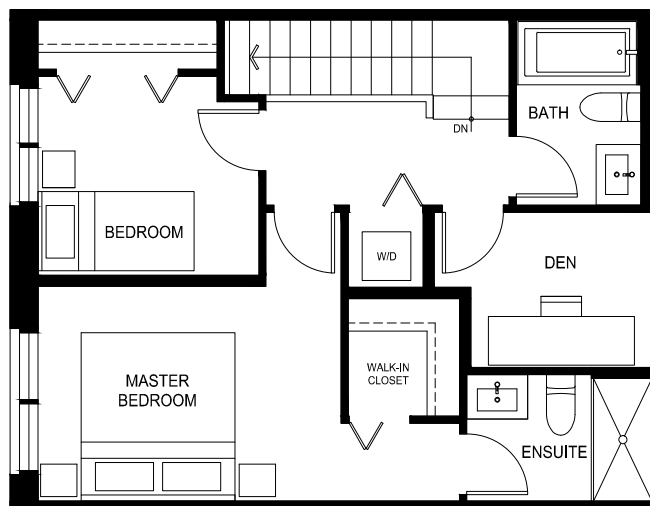
QUINN
CENTRAL SURREY



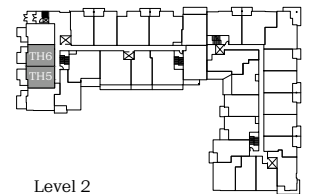
MAIN



Level 3



UPPER



Level 2



porte.ca/Quinn

In order to maintain a high standard for our homes, the developer reserves the right to modify specifications, plans or materials without notice. Images and/or renderings (and possible upgrades) may not be an exact representation of the finished buildings. Interior and exterior sizes are approximate and are subject to change. Renderings are artist's concept only. This is not an offering for sale, any such offering can only be made with a Disclosure Statement. E.&O.E.

porte⁷
homes

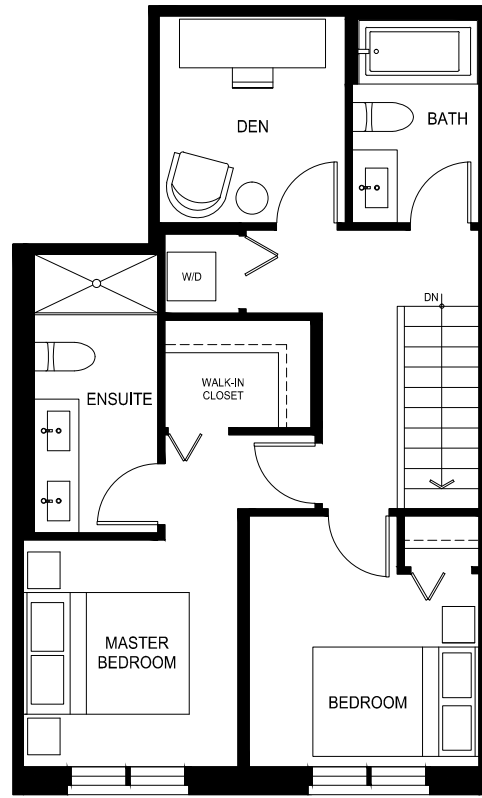
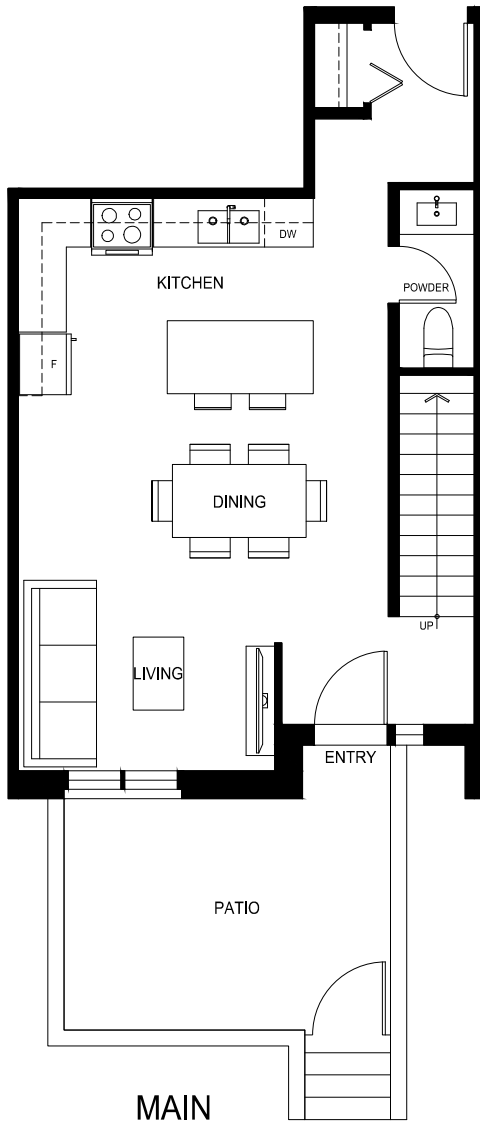
Townhome 3

2 Bed, 2.5 Bath + Den

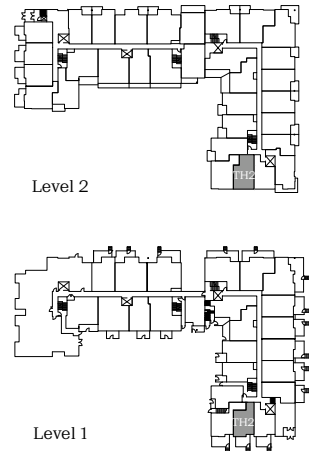
Interior: 1079 Sq Ft / Exterior: 135 Sq Ft

Total: 1214 Sq Ft

QUINN
CENTRAL SURREY



UPPER



porte.ca/Quinn

In order to maintain a high standard for our homes, the developer reserves the right to modify specifications, plans or materials without notice. Images and/or renderings (and possible upgrades) may not be an exact representation of the finished buildings. Interior and exterior sizes are approximate and are subject to change. Renderings are artist's concept only. This is not an offering for sale, any such offering can only be made with a Disclosure Statement. E.&O.E.

porte⁷
homes

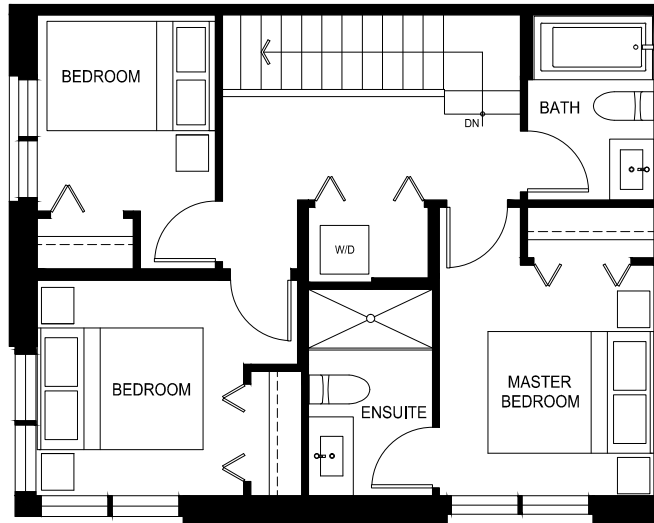
Townhome 4

3 Bed, 2.5 Bath

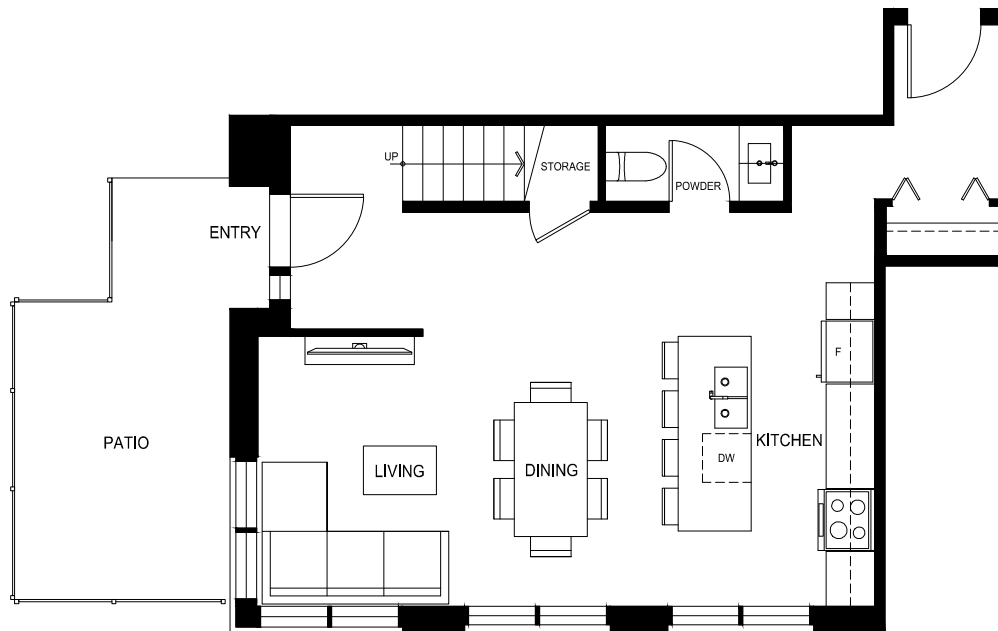
Interior: 1131 Sq Ft / Exterior: 148 Sq Ft

Total: 1279 Sq Ft

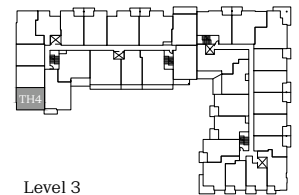
QUINN
CENTRAL SURREY



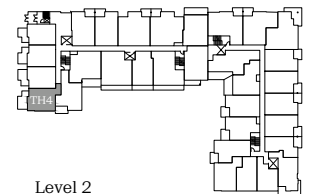
UPPER



MAIN



Level 3



Level 2



porte.ca/Quinn

In order to maintain a high standard for our homes, the developer reserves the right to modify specifications, plans or materials without notice. Images and/or renderings (and possible upgrades) may not be an exact representation of the finished buildings. Interior and exterior sizes are approximate and are subject to change. Renderings are artist's concept only. This is not an offering for sale, any such offering can only be made with a Disclosure Statement. E.&O.E.

porte⁷
homes

Townhome 5

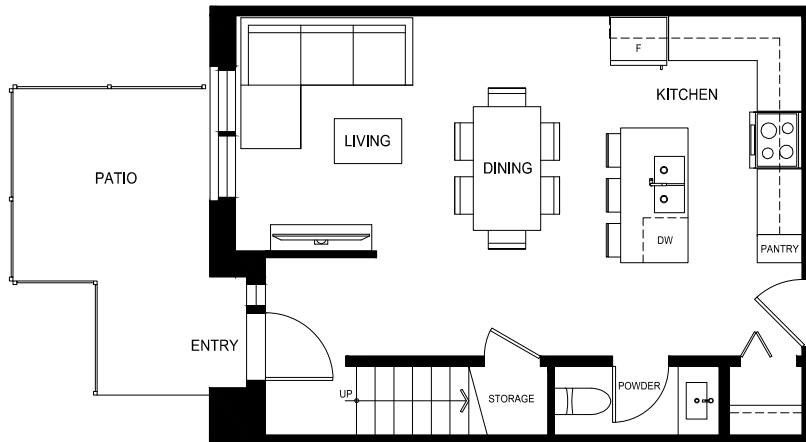
3 Bed, 2.5 Bath

Interior: 1135 Sq Ft / Exterior: 177 Sq Ft

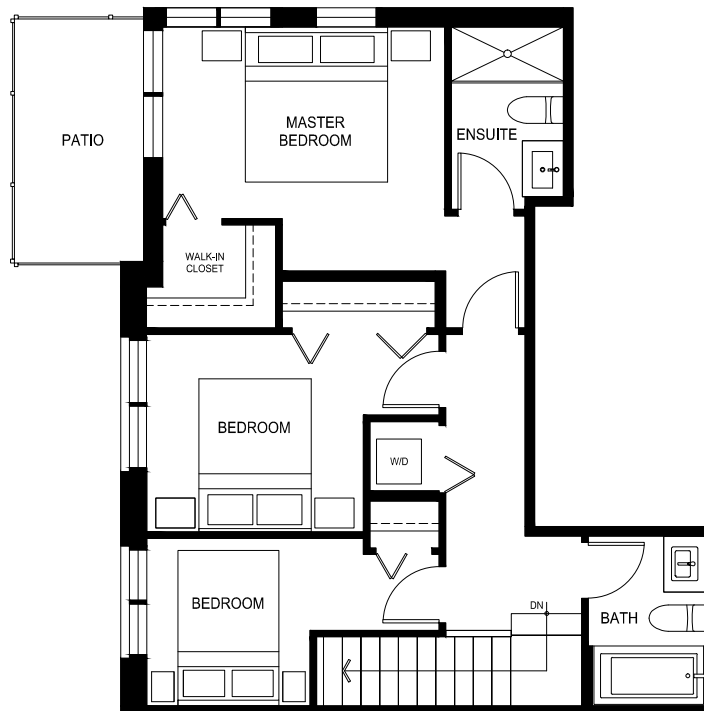
Total: 1312 Sq Ft

QUINN

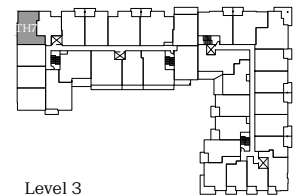
CENTRAL SURREY



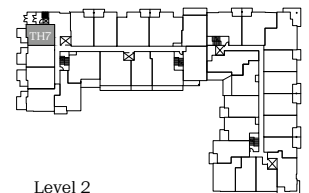
MAIN



UPPER



Level 3



Level 2



porte.ca/Quinn

In order to maintain a high standard for our homes, the developer reserves the right to modify specifications, plans or materials without notice. Images and/or renderings (and possible upgrades) may not be an exact representation of the finished buildings. Interior and exterior sizes are approximate and are subject to change. Renderings are artist's concept only. This is not an offering for sale, any such offering can only be made with a Disclosure Statement. E.&O.E.

porte⁷
homes

Townhome 6

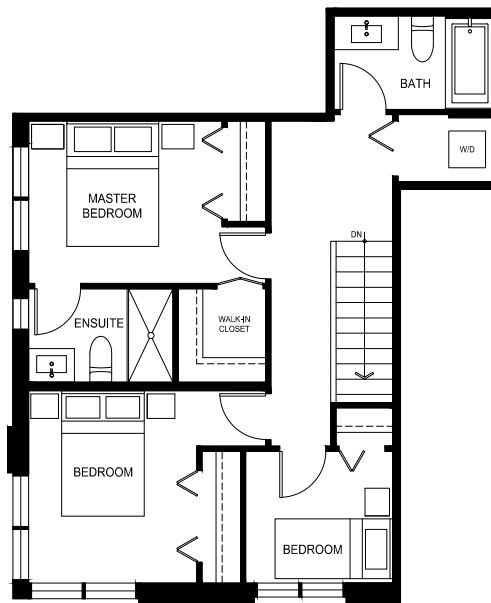
3 Bed, 2.5 Bath

Interior: 1176 Sq Ft / Exterior: 170 Sq Ft

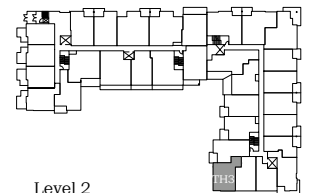
Total: 1346 Sq Ft

QUINN

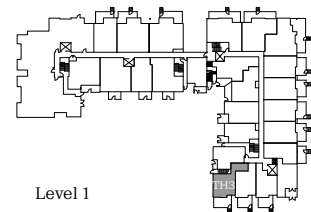
CENTRAL SURREY



UPPER



Level 2



Level 1



porte.ca/Quinn

In order to maintain a high standard for our homes, the developer reserves the right to modify specifications, plans or materials without notice. Images and/or renderings (and possible upgrades) may not be an exact representation of the finished buildings. Interior and exterior sizes are approximate and are subject to change. Renderings are artist's concept only. This is not an offering for sale, any such offering can only be made with a Disclosure Statement. E.&O.E.

porte⁷
homes