

Plan D6

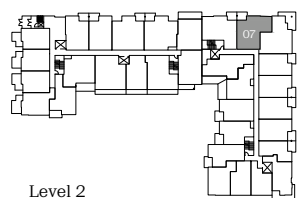
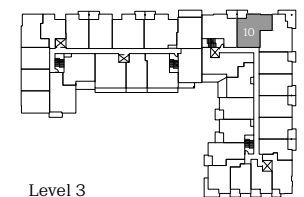
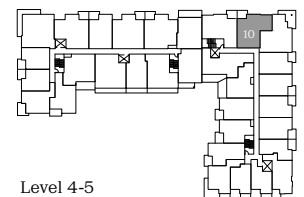
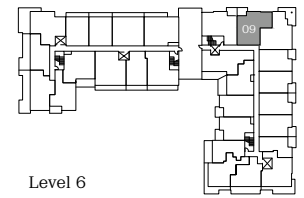
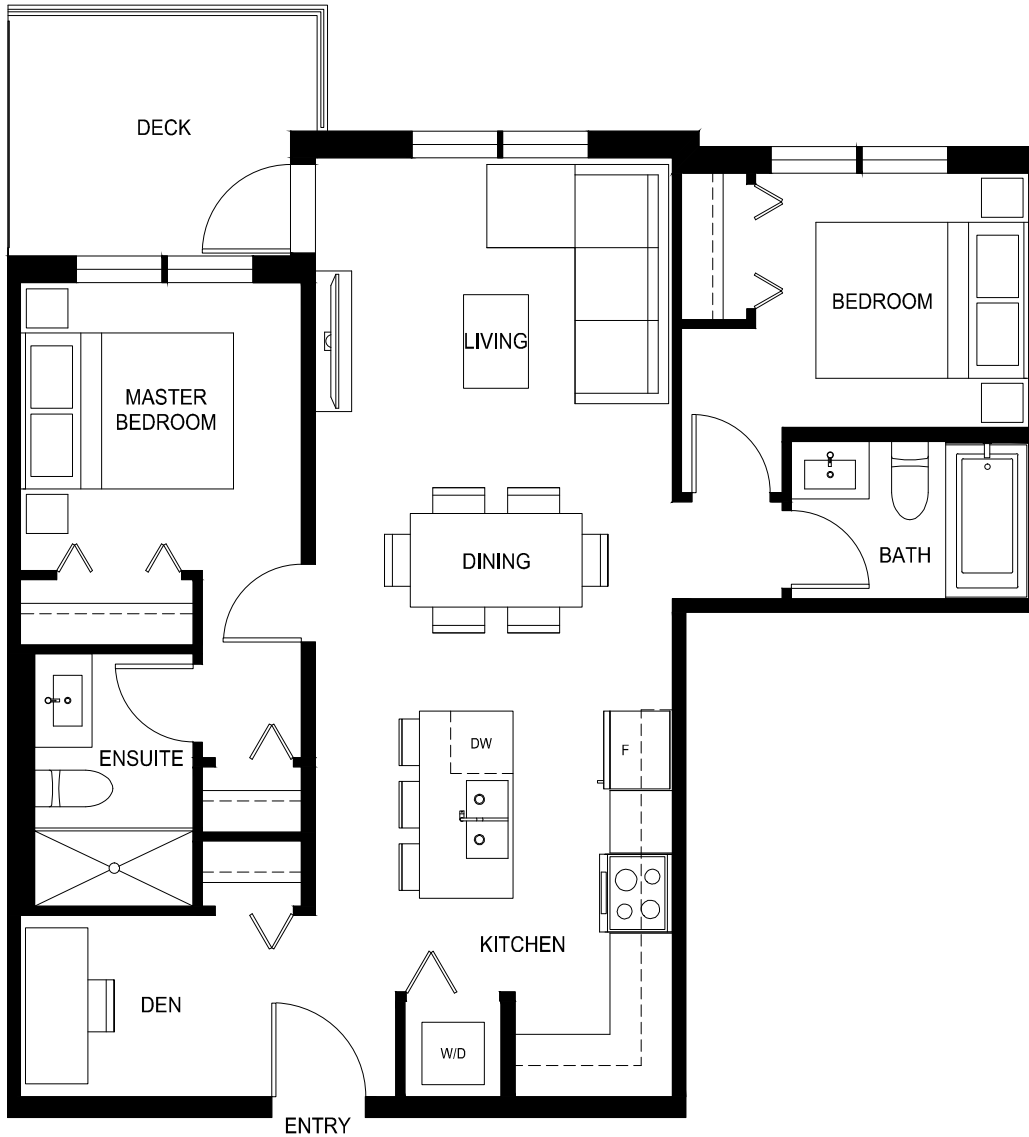
2 Bed + Den, 2 Bath

Interior: 800 Sq Ft / Exterior: 61-215 Sq Ft

Total: 861-1015 Sq Ft

QUINN

CENTRAL SURREY



porte.ca/Quinn

In order to maintain a high standard for our homes, the developer reserves the right to modify specifications, plans or materials without notice. Images and/or renderings (and possible upgrades) may not be an exact representation of the finished buildings. Interior and exterior sizes are approximate and are subject to change. Renderings are artist's concept only. This is not an offering for sale, any such offering can only be made with a Disclosure Statement. E.&O.E.

porte⁷
homes