

# Plan D16

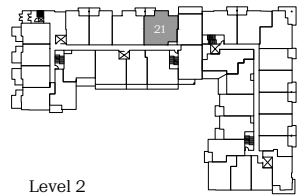
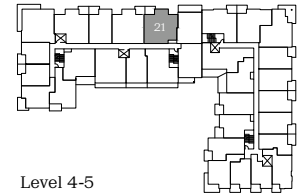
2 Bed + Den, 2 Bath

Interior: 879 Sq Ft / Exterior: 65 Sq Ft

Total: 944 Sq Ft

# QUINN

CENTRAL SURREY



[porte.ca/Quinn](http://porte.ca/Quinn)

In order to maintain a high standard for our homes, the developer reserves the right to modify specifications, plans or materials without notice. Images and/or renderings (and possible upgrades) may not be an exact representation of the finished buildings. Interior and exterior sizes are approximate and are subject to change. Renderings are artist's concept only. This is not an offering for sale, any such offering can only be made with a Disclosure Statement. E.&O.E.

porte<sup>1</sup>  
homes